

A natural world in miniature

COLLECTA®



Die ganze Welt der Spielfiguren  
Spielzeug-Guenzler.de

Oliver Zell - Spielwaren  
Jan-van-Werth-Str. 19  
41564 Kaarst  
Tel 02131 / 38 67 011



2011



Each prehistoric sculpture has been approved by Anthony Beeson, a well respected expert in palaeoimagery who is also an art librarian, archaeologist and collector, based in the City of Bristol, England.

*Anthony Beeson.*



Born in 1948, Anthony Beeson has been passionate about dinosaurs since the age of seven. He brings a lifetime of study and experience to the Collecta line of Prehistoric Animal models. Anthony is well known in his field of Palaeoimagery or the study of dinosaur reconstruction and has conducted research, mounted exhibitions, and written on the subject. A lifetime collector of dinosaur toys he has one of the largest such reference collections in Britain, and thus has a unique insight into the history and possibilities of the product. Based in Bristol, England, a centre of dinosaur research in Britain, he was for 37 years the Librarian and developer of the Bristol Art Library, the largest such establishment outside of London. Friends and contacts include John Sibbick the internationally renown dinosaur painter and curatorial staff at the Natural History Museum in London. Anthony Beeson is also one of Britain's most noted classical iconographers and has written extensively for various academic journals and lectured at the British Museum and elsewhere. He has also appeared on British television and is a published author.

Anthony joined Collecta in 2006 after the issue of the first six dinosaurs in the line. His mission is to educate children through play and to open their imaginations by showing them the vast number of species that lived in Prehistoric times. Up until Collecta started its range of models, most toy companies were content to concentrate on the same few species that were mostly American in origin. Anthony has been determined to produce models of neglected or virtually unknown animals from all over the world so that they will become known to children of all nations. Through Anthony's suggestions and expertise, Collecta has now gained a reputation for producing some of the most interesting and lively dinosaur models available to children and collectors throughout the world. Old and neglected and newly discovered species are equally important in the line and so Collecta has produced the first ever reconstruction of *Hylaosaurus* (the third dinosaur species, discovered in 1832) and the *Concavenator* found in 2010.

Anthony and Collecta are committed to producing the most accurate reconstructions that may be achieved. It is an ongoing and developing aim. Reports that new display models in museums closely resemble the firm's earlier reconstructions and that palaeontologists who discovered species have bought the models themselves, suggest that this is being achieved. Recently the firm was approached by a museum to produce a model of one of its dinosaurs which was a further accolade.

The long design process for each toy figure starts with Anthony suggesting a species to be modelled. As an artist himself Anthony will then either provide his own drawings of the animal as he visualises it or suggest pertinent poses for the model maker to follow. What is most important is that the figure is closely based on the skeletal material that survives. Anthony is very keen that the Collecta modeller uses the skeleton or skull as a reference tool rather than just copying what someone else has painted before. Scientific reports concerning the original fossils are studied and the most recent theories pertaining to the animals weighed and often incorporated into the toy figure. Anthony's own opinions as to their probable appearance in life also weighs heavily in the look of the finished model. Where such evidence does not survive in the existing fossil then an allied species is used as a reference for reconstruction.

Once the model maker has made an initial attempt at the figure the first photographs are sent to Anthony. After checking the figure for accuracy against the skeletal remains, the images are returned with anatomical corrections marked together with suggestions for improving the pose. This process is repeated, sometimes for several months until Anthony is satisfied. Then a suitable colour scheme is suggested and the model painters finish a sample figure that is posted to Britain in order that Anthony can handle it and study it from all angles as photographs can be misleading. Anthony then photographs the model and indicates any final alterations to be undertaken. When these are completed and he has approved the result, the final process of tooling and moulding takes place and the toy is produced.

Anthony and Collecta's main purpose in producing the series is to create really accurate and stimulating models that will excite and educate children throughout the world to the wonders of their Prehistoric past. It is hoped that every year will see an improvement in the quality of the figures with early examples gradually replaced by more up-to-date versions and that the whole series will eventually form a visual toy encyclopaedia of ancient life forms on Earth that children of every continent can appreciate.



*Deborah is a sculptor living in Southern California. As a sculptor, she observes the anatomy, movement and expressions of horses as well as their unique qualities that make each horse an individual.*

*Deborah McIsenhardt*

# Table of Contents

## Animal Scale



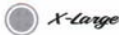
*Small*



*Medium*



*Large*



*X-Large*

All our models are individually hand crafted to the highest standards and made with only the finest and safest materials. As part of our ongoing product improvement programme, we continually strive to improve and upgrade all our models in an effort to bring you the best possible collection.

We hope you enjoy our models as much as we have enjoyed creating them.

All our products are rigorously tested to ensure they meet the highest safety standards.

*“Building  
a Natural World  
in Miniature for  
Collectors.”*

### Prehistoric Life Collection

pg 006 - pg 052



### Horse Collection

pg 053 - pg 076



### Farm Life Collection

pg 077 - pg 088



### Wild Life Collection

pg 089 - pg 110



### Woodlands Collection

pg 111 - pg 117



### Insects Collection

pg 118 - pg 122



### Cats & Dogs Collection

pg 123 - pg 133



### Sea Life Collection

pg 134 - pg 140



### Mythical Creatures & Soldiers

pg 141 - pg 148



### Wish List

pg 149 - pg 155



# PREHISTORIC LIFE





• 89295  
*Rhomaleosaurus*  
Deluxe Window Box

• 88440

- EN - Rhomaleosaurus - Deluxe 1:40 Scale**  
NL - Rhomaleosaurus - Deluxe 1:40  
FR - Rhomaleosaure - Deluxe 1:40  
IT - Romaleosauro - Deluxe Scala 1:40  
ES - Rhomaleosaurus - Deluxe 1:40  
PT - Romaleosauro - Versão Luxo Escala 1:40  
DE - Rhomaleosaurus - Deluxe Massstab 1:40



**L 30 x H 5 cm**  
**L 11.8 x H 2 in**

**New**

Start  
2011

• 88251

- EN - Tyrannosaurus Rex - Deluxe 1:40 Scale**  
NL - Tyrannosaurus Rex - Deluxe 1:40  
FR - Tyrannosaure - Deluxe 1:40  
IT - Tyrannosaurus Rex - Deluxe 1:40  
ES - Tyrannosaurus - Deluxe 1:40  
PT - Tiranossauro Rex - Versão Luxo Escala 1:40  
DE - Tyrannosaurus Rex - Deluxe Massstab 1:40

**L 29.5 x H 15 cm**  
**L 11.6 x H 6 in**



• 89163  
*Tyrannosaurus Rex*  
Deluxe Window Box



pg 007



COLLECTA

*Deluxe Prehistoric Life Collection*

Each 1:40 Dinosaur comes with a mini paleontologist "Sir Arthur" as the size gauge for the Dinosaurs.

• 88250

**EN - Spinosaurus - Deluxe 1:40 Scale**

NL - Spinosaurus - Deluxe 1:40

FR - Spinosaurus - Deluxe 1:40

IT - Spinosaurus - Deluxe 1:40

ES - Spinosaurus - Deluxe 1:40

PT - Espinosauro- Versão Luxo Escala 1:40

DE - Spinosaurus - Deluxe Massstab 1:40



**L 32 x H 16 cm**  
**L 12.5 x H 6.3 in**



• 89165  
**Spinosaurus**  
Deluxe Window Box



• 89158  
**Hylaeosaurus**  
Deluxe Window Box



**L 25 x H 9 cm**  
**L 10 x H 3.5 in**

• 88305

**EN - Hylaeosaurus - Deluxe 1:40 Scale**

NL - Hylaeosaurus - Deluxe 1:40

FR - Hylaeosaurus - Deluxe 1:40

IT - Hylaeosaurus - Deluxe 1:40

ES - Hylaeosaurus - Deluxe 1:40

PT - Hylaeosaurus - Versão Luxo Escala 1:40

DE - Hylaeosaurus - Deluxe Massstab 1:40

pg 008

**Deluxe Prehistoric Life Collection**

Each 1:40 Dinosaur comes with a mini paleontologist "Sir Arthur" as the size gauge for the Dinosaurs.

L 28.5 x H 16.5 cm

L 11.2 x H 6.5 in

New

April  
2011

• 88514

- EN - Dacentrurus - Deluxe 1:40 Scale
- NL - Dacentrurus - Deluxe 1:40
- FR - Dacentrurus - Deluxe 1:40
- IT - Dacentrurus - Deluxe Scala 1:40
- ES - Dacentrurus - Deluxe 1:40
- PT - Dacentrurus - Versão Luxo Escala 1:40
- DE - Dacentrurus - Deluxe Massstab 1:40



• 89159

**Baryonyx**  
Deluxe Window Box



• 88248

- EN - Baryonyx - Deluxe 1:40 Scale
- NL - Baryonyx - Deluxe 1:40
- FR - Baryonyx - Deluxe 1:40
- IT - Baryonyx - Deluxe 1:40
- ES - Baryonyx - Deluxe 1:40
- PT - Baryonyx - Versão Luxo Escala 1:40
- DE - Baryonyx - Deluxe Massstab 1:40

L 26 x H 11 cm

L 10 x H 4 in



pg 009

COLLECT-A-DINOSAUR

• 88343

**EN - Scelidosaurus - Deluxe 1:40 Scale**

NL - Scelidosaurus - Deluxe 1:40

FR - Scelidosaur - Deluxe 1:40

IT - Scelidosaurus - Deluxe 1:40

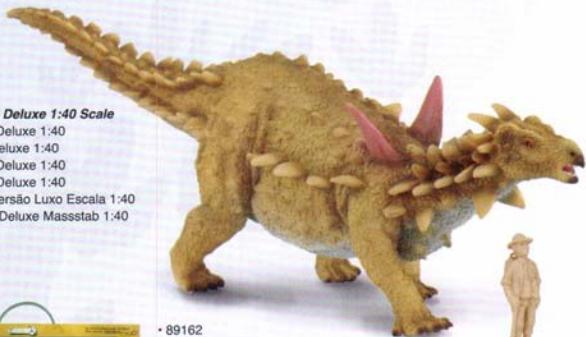
ES - Scelidosaurus - Deluxe 1:40

PT - Celidossauro - Versão Luxo Escala 1:40

DE - Scelidosaurus - Deluxe Massstab 1:40

**L 24 x H 8.2 cm**

**L 9.5 x H 3.2 in**



• 89162

**Scelidosaurus**

Deluxe Window Box



• 89160

**Pteranodon**

Deluxe Window Box



• 88249

**EN - Pteranodon - Deluxe 1:40 Scale**

NL - Pteranodon - Deluxe 1:40

FR - Pteranodon - Deluxe 1:40

IT - Pteranodon - Deluxe 1:40

ES - Pteranodon - Deluxe 1:40

PT - Pteranodon - Versão Luxo Escala 1:40

DE - Pteranodon - Deluxe Massstab 1:40

**L 36 x H 12 cm**

**L 14 x H 4.7 in**

pg 010

**Deluxe Prehistoric Life Collection**

**L 29 x H 14 cm**  
**L 11.4 x H 5.6 in**



• 88406

**EN - Triceratops - Deluxe 1:40 Scale**

**NL - Triceratops - Deluxe 1:40**

**FR - Triceratops - Deluxe 1:40**

**IT - Triceratops - Deluxe scala 1:40**

**ES - Triceratops - Escala 1:40 - Versión Lujo**

**PT - Triceratops - Escala 1:40 - Versão Luxo**

**DE - Triceratops - Deluxe Maßstab 1:40**

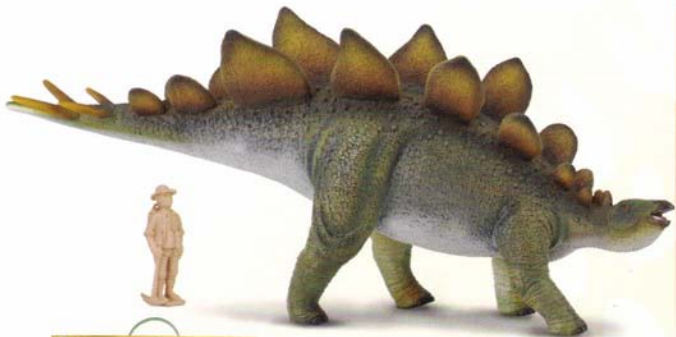
• 89208

**Triceratops**

**Deluxe Window Box**



pg 011



• 88353

**EN - Stegosaurus - Deluxe 1:40 Scale**

**NL - Stegosaurus - Deluxe 1:40**

**FR - Stegosaurus - Deluxe 1:40**

**IT - Stegosaurus - Deluxe 1:40**

**ES - Stegosaurus - Deluxe 1:40**

**PT - Estregossauro - Versão Luxo Escala 1:40**

**DE - Stegosaurus - Deluxe Maßstab 1:40**

**L 24 x H 10 cm**  
**L 9.5 x H 3.9 in**

• 89166

**Stegosaurus**

**Deluxe Window Box**





**L 39 x H 11.5 cm**

**L 15 x H 4.5 in**

• 88246

**EN - Agustinia - Deluxe 1:40 Scale**

NL - Agustinia - Deluxe 1:40

FR - Agustinia - Deluxe 1:40

IT - Agustinia - Deluxe 1:40

ES - Agustinia - Deluxe 1:40

PT - Agustinia - Versão Luxo Escala 1:40

DE - Agustinia - Deluxe Massstab 1:40

• 88405

**EN - Brachiosaurus - Deluxe 1:40 Scale**

NL - Brachiosaurus - Deluxe 1:40

FR - Brachiosaure - Deluxe 1:40

IT - Brachiosauro - Deluxe scala 1:40

ES - Brachiosaurus- Escala 1:40- Versión Lujo

PT - Braquiossauro- Escala 1:40- Versão Luxo

DE - Brachiosaurus - Deluxe Massstab 1:40

**L 27.5 x H 28.5 cm**

**L 10.9 x H 11.2 in**



fig 012

**Deluxe Prehistoric Life Collection**

Each 1:40 Dinosaur comes with a mini paleontologist "Sir Arthur" as the size gauge for the Dinosaurs.



• 89164  
**Agustinia**  
Deluxe Window Box



• 88247

- EN - Ankylosaurus - Deluxe 1:40 Scale**  
NL - Ankylosaurus - Deluxe 1:40  
FR - Ankylosaure - Deluxe 1:40  
IT - Ankylosaurus - Deluxe 1:40  
ES - Ankylosaurus - Deluxe 1:40  
PT - Anquilossauro - Versão Luxo Escala 1:40  
DE - Ankylosaurus - Deluxe Masstab 1:40

**L 25 x H 10 cm**

**L 10 x H 3.9 in**



• 89161  
**Ankylosaurus**  
Deluxe Window Box



pg 013



• 89207  
**Velociraptor**  
Deluxe Window Box



• 88407

**EN - Velociraptor - Deluxe 1:6 Scale**  
NL - Velociraptor - Deluxe 1:6  
FR - Velociraptor - Deluxe 1:6  
IT - Velociraptor - Deluxe scala 1:6  
ES - Velociraptor - Escala 1:6 - Versión Lujo  
PT - Velociraptor - Escala 1:6 - Versão Luxo  
DE - Velociraptor - Deluxe Massstab 1:6

**L 31.4 x H 12.1 cm**

**L 12.4 x H 4.8 in**



• 88314

**EN - Paralititan - Deluxe**  
NL - Paralititan - Deluxe  
FR - Paralititan - Deluxe  
IT - Paralititan - Deluxe  
ES - Paralititan - Deluxe  
PT - Paralititan - Versão Luxo  
DE - Paralititan - Deluxe

**L 25 x H 11 cm**

**L 10 x H 4 in**

pg 014

**Deluxe Prehistoric Life Collection**

Each 1:40 Dinosaur comes with a mini paleontologist "Sir Arthur" as the size gauge for the Dinosaurs.

• 88465

EN - Kelenken - Deluxe  
NL - Kelenken - Deluxe  
FR - Kelenken - Deluxe  
IT - Kelenken - Deluxe  
ES - Kelenken - Deluxe  
PT - Kelenken - Versão Luxo  
DE - Kelenken - Deluxe

**L 19.5 x H 14.5 cm**  
**L 7.7 x H 5.7 in**

**New**  
Jan  
2011



• 88395

EN - Jobaria - Deluxe 1:40 Scale  
NL - Jobaria-Deluxe 1:40  
FR - Jobaria-Deluxe 1:40  
IT - Jobaria - Deluxe escala 1:40  
ES - Jobaria - escala 1:40 versión lujo  
PT - Jobaria - escala 1:40 versão luxo  
DE - Jobaria - Deluxe Masstab 1:40

**L 23 x H 29.5 cm**  
**L 9 x H 11.8 in**



pg 015

• 88308

**EN - Nigersaurus - Deluxe 1:20 Scale**

NL - Nigersaurus - Deluxe 1:20

FR - Nigersaure - Deluxe 1:20

IT - Nigersaurus - Deluxe 1:20

ES - Nigersaurus - Deluxe 1:20

PT - Nigerssauro - Versão Luxo Escala 1:20

DE - Nigersaurus - Deluxe Massstab 1:20

**L 32 x H 12.5 cm**

**L 12.5 x H 5 in**



• 88255

**EN - Tyrannosaurus Rex - Deluxe 1:15 Scale**

NL - Tyrannosaurus Rex - Deluxe 1:15

FR - Tyrannosaure - Deluxe 1:15

IT - Tyrannosaurus Rex - Deluxe 1:15

ES - Tyrannosaurus - Deluxe 1:15

PT - Tiranossauro Rex - Versão Luxo Escala 1:15

DE - Tyrannosaurus Rex - Deluxe Massstab 1:15

**L 93 x H 44 cm**

**L 36.5 x H 17.3 in**



pg 016

*Deluxe Prehistoric Life Collection*

• 89157  
**Nigersaurus**  
Deluxe Window Box



• 89309  
**Tyrannosaurus Rex**  
Deluxe Carry Box



pg 017



• 88304

*EN - Woolly Mammoth - Deluxe 1:20 Scale*

*NL - Wolharige Mammoet - Deluxe 1:20*

*FR - Mammouth Laineux - Deluxe 1:20*

*IT - Mammut - Deluxe 1:20*

*ES - Mamut Lanudo - Deluxe 1:20*

*PT - Mamute - Versão Luxo Escala 1:20*

*DE - Wollhaarmammut - Deluxe Massstab 1:20*

**L 18 x H 13.5 cm**

**L 7.1 x H 5.3 in**



• 88333

*EN - Woolly Mammoth Calf*

*NL - Mammoetkalf*

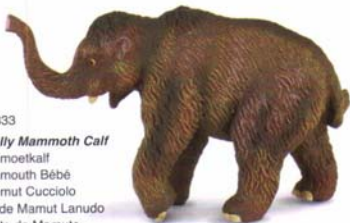
*FR - Mammouth Bébé*

*IT - Mammut Cucciolo*

*ES - Cría de Mamut Lanudo*

*PT - Filhote de Mamute*

*DE - Wollhaarmammut Kalb*



• 88303

**EN - Smilodon**

NL - Sabeltandtijger

FR - Tigre à Dents de Sabre

IT - Smilodon

ES - Smilodon

PT - Smilodon

DE - Smilodon



• 88313

**EN - Paraceratherium - Deluxe**

NL - Paraceratherium - Deluxe

FR - Paraceratherium - Deluxe

IT - Indricotherium - Deluxe

ES - Paraceratherium - Deluxe

PT - Paraceratherium - Versão Luxo

DE - Paraceratherium - Deluxe

**L 18 x H 15.5 cm**

**L 7.1 x H 6.1 in**



pg 019



• 88036

**EN - Tyrannosaurus Rex**  
**NL - Tyrannosaurus Rex**  
**FR - Tyrannosaure**  
**IT - Tyrannosaurus Rex**  
**ES - Tyrannosaurus**  
**PT - Tiranossauro Rex**  
**DE - Tyrannosaurus Rex**



• 88034

**EN - Velociraptor**  
**NL - Velociraptor**  
**FR - Velociraptor**  
**IT - Velociraptor**  
**ES - Velociraptor**  
**PT - Velociraptor**  
**DE - Velociraptor**



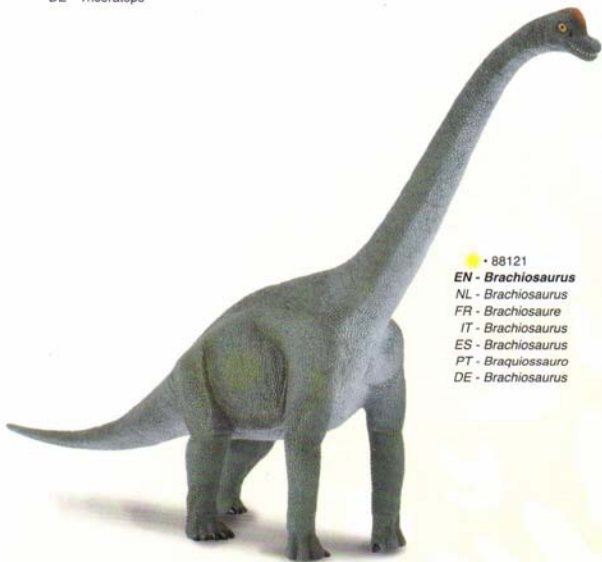
• 88038

**EN - Stegosaurus**  
**NL - Stegosaurus**  
**FR - Stegosaure**  
**IT - Stegosaurus**  
**ES - Stegosaurus**  
**PT - Estegossauro**  
**DE - Stegosaurus**



• 88037

**EN - Triceratops**  
**NL - Triceratops**  
**FR - Triceratops**  
**IT - Triceratops**  
**ES - Triceratops**  
**PT - Tricerátopo**  
**DE - Triceratops**



• 88121

**EN - Brachiosaurus**  
**NL - Brachiosaurus**  
**FR - Brachiosaure**  
**IT - Brachiosaurus**  
**ES - Brachiosaurus**  
**PT - Braquiossauro**  
**DE - Brachiosaurus**



pg 021



● • 88400

**EN - Kentrosaurus**

NL - Kentrosaurus

FR - Kentrosaure

IT - Kentrosauro

ES - Kentrosaurus

PT - Kentrossauro

DE - Kentrosaurus



● • 88441

**EN - Hatzegopteryx**

NL - Hatzegopteryx

FR - Hatzegopteryx

IT - Atzegotterige

ES - Hatzegopteryx

PT - Hatzegopteryx

DE - Hatzegopteryx



● • 88361

**EN - Tenontosaurus**

NL - Tenontosaurus

FR - Tenontosaurus

IT - Tenontosaurus

ES - Tenontosaurus

PT - Tenontossauro

DE - Tenontosaurus

New

Jan  
2011



• 88472  
EN - *Lourinhanosaurus*  
NL - *Lourinhanosaurus*  
FR - *Lourinhanosaure*  
IT - *Lourinhanosaurus*  
ES - *Lourinhanosaurus*  
PT - *Lourinhanosauro*  
DE - *Lourinhanosaurus*



• 88222  
EN - *Cryolophosaurus*  
NL - *Cryolophosaurus*  
FR - *Cryolophosaure*  
IT - *Cryolophosaurus*  
ES - *Cryolophosaurus*  
PT - *Criolofossauro*  
DE - *Cryolophosaurus*



• 88370  
EN - *Eotyrannus*  
NL - *Eotyrannus*  
FR - *Eotyrannus*  
IT - *Eotiranno*  
ES - *Eotyrannus*  
PT - *Eotyrannus*  
DE - *Eotyrannus*



pg 023

COLLECTA

• 88226

**EN - Pachyrhinosaurus**

NL - Pachyrhinosaurus

FR - Pachyrhinosaur

IT - Pachyrhinosaurus

ES - Pachyrhinosaurus

PT - Paquirinossauro

DE - Pachyrhinosaurus



• 88462

**EN - Alamosaurus**

NL - Alamosaurus

FR - Alamosaure

IT - Alamosauro

ES - Alamosaurus

PT - Alamosauro

DE - Alamosaurus



**New**

Jan  
2011

• 88340

**EN - Tarbosaurus**

NL - Tarbosaurus

FR - Tarbosaur

IT - Tarbosaurus

ES - Tarbosaurus

PT - Tarbossauro

DE - Tarbosaurus





• 88473  
**EN - Irritator**  
NL - Irritator  
FR - Irritator  
IT - Irritator  
ES - Irritator  
PT - Irritator  
DE - Irritator

**New**

*Jan  
2011*



• 88371  
**EN - Herrerasaurus**  
NL - Herrerasaurus  
FR - Herrerasaure  
IT - Herrerasauro  
ES - Herrerasaurus  
PT - Herrerasauro  
DE - Herrerasaurus



• 88372  
**EN - Lufengosaurus**  
NL - Lufengosaurus  
FR - lufengosaure  
IT - Lufengosauro  
ES - Lufengosaurus  
PT - Lufengossauro  
DE - Lufengosaurus



pg 025

New

Jan  
2011

• 88466

EN - *Ampelosaurus*

NL - *Ampelosaurus*

FR - *Ampelosaure*

IT - *Ampelosauro*

ES - *Ampelosaurus*

PT - *Ampelosauro*

DE - *Ampelosaurus*



• 88374

EN - *Rugops*

NL - *Rugops*

FR - *Rugops*

IT - *Rugops*

ES - *Rugops*

PT - *Rugops*

DE - *Rugops*



• 88427

EN - *Afrovenator*

NL - *Afrovenator*

FR - *Afrovenator*

IT - *Afrovenator*

ES - *Afrovenator*

PT - *Afrovenator*

DE - *Afrovenator*





• 88039

**EN - Pteranodon**

NL - Pteranodon

FR - Pteranodon

IT - Pteranodon

ES - Pteranodon

PT - Pteranodon

DE - Pteranodon



• 88504

**New**

*April  
2011*

**EN - Proceratosaurus**

NL - Proceratosaurus

FR - Proceratosaure

IT - Proceratosauro

ES - Proceratosaurus

PT - Proceratosaurus

DE - Proceratosaurus



• 88060

**EN - Eustreptospondylus**

NL - Eustreptospondylus

FR - Eustreptospondylus

IT - Eustreptospondylus

ES - Eustreptospondylus

PT - Eustreptospondylus

DE - Eustreptospondylus

pg 027



• 88319

**EN - Lambeosaurus**  
NL - Lambeosaurus  
FR - Lambeosaure  
IT - Lambeosaurus  
ES - Lambeosaurus  
PT - Lambeossauro  
DE - Lambeosaurus



**New**

*April 2011*

• 88509

**EN - Liliensternus**  
NL - Liliensternus  
FR - Liliensternus  
IT - Liliensterno  
ES - Liliensternus  
PT - Liliensternus  
DE - Liliensternus



• 88227

**EN - Shunosaurus**  
NL - Shunosaurus  
FR - Shunosauire  
IT - Shunosaurus  
ES - Shunosaurus  
PT - Shunossauro  
DE - Shunosaurus



**New**  
April  
2011

• 88512  
**EN - Torosaurus**  
NL - Torosaurus  
FR - Torosaure  
IT - Torosauro  
ES - Torosaurus  
PT - Torosauro  
DE - Torosaurus

• 88354  
**EN - Psittacosaurus**  
NL - Psittacosaurus  
FR - Psittacosaur  
IT - Psittacosaurus  
ES - Psittacosaurus  
PT - Psittacosaurus  
DE - Psittacosaurus



• 88131  
**EN - Spinosaurus**  
NL - Spinosaurus  
FR - Spinosaur  
IT - Spinosaurus  
ES - Spinosaurus  
PT - Espinossauro  
DE - Spinosaurus

pg 029



• 88513

EN - Plateosaurus

NL - Plateosaurus

FR - Plateosaure

IT - Plateosauro

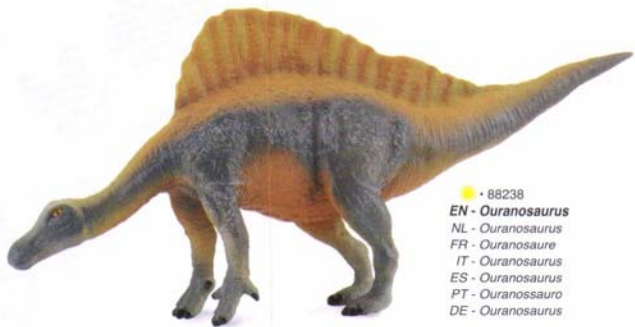
ES - Plateosaurus

PT - Plateosauro

DE - Plateosaurus

New

April  
2011



• 88238

EN - Ouranosaurus

NL - Ouranosaurus

FR - Ouranosaur

IT - Ouranosaurus

ES - Ouranosaurus

PT - Ouranosaurus

DE - Ouranosaurus



• 88108  
**EN - Allosaurus**  
NL - Allosaurus  
FR - Allosaure  
IT - Allosaurus  
ES - Allosaurus  
PT - Allosauro  
DE - Allosaurus



• 88220  
**EN - Amargasaurus**  
NL - Amargasaurus  
FR - Amargasaur  
IT - Amargasaurus  
ES - Amargasaurus  
PT - Amargassau  
DE - Amargasaurus

**New**  
April  
2011

• 88515  
**EN - Concavenator**  
NL - Concavenator  
FR - Concavenator  
IT - Concavenator  
ES - Concavenator  
PT - Concavenator  
DE - Concavenator



pg 031



• 88505  
**EN - Australovenator**  
NL - Australovenator  
FR - Australovenator  
IT - Australovenator  
ES - Australovenator  
PT - Australovenator  
DE - Australovenator

New

April  
2011

• 88375

**EN - Minmi**  
NL - Minmi  
FR - Minmi  
IT - Minmi  
ES - Minmi  
PT - Minmi  
DE - Minmi



• 88143  
**EN - Ankylosaurus**  
NL - Ankylosaurus  
FR - Ankylosaure  
IT - Ankylosaurus  
ES - Ankylosaurus  
PT - Anquilossauro  
DE - Ankylosaurus

New

April  
2011



• 88510

EN - *Utahraptor*  
NL - *Utahraptor*  
FR - *Utahraptor*  
IT - *Utahraptor*  
ES - *Utahraptor*  
PT - *Utahraptor*  
DE - *Utahraptor*



• 88147

EN - *Styracosaurus*  
NL - *Styracosaurus*  
FR - *Styracosaure*  
IT - *Styracosaurus*  
ES - *Styracosaurus*  
PT - *Estiracossauro*  
DE - *Styracosaurus*

pg 033



• 88253

EN - *Cetiosaurus*  
NL - *Cetiosaurus*  
FR - *Cetiosaure*  
IT - *Cetiosaurus*  
ES - *Cetiosaurus*  
PT - *Cetiossauro*  
DE - *Cetiosaurus*



• 88315

**EN - Rhoetosaurus**

NL - Rhoetosaurus

FR - Rhoetosauire

IT - Rhoetosaurus

ES - Rhoetosaurus

PT - Roetosaurus

DE - Rhoetosaurus

New

April  
2011

• 88511

**EN - Ornithocheirus**

NL - Ornithocheirus

FR - Ornithocheirus

IT - Ornithocheirus

ES - Ornithocheirus

PT - Ornithocheiro

DE - Ornithocheirus



● • 88239

**EN - Polacanthus**  
NL - Polacanthus  
FR - Polacanthus  
IT - Polacanthus  
ES - Polacanthus  
PT - Polacanto  
DE - Polacanthus



● • 88221

**EN - Becklespinax**  
NL - Becklespinax  
FR - Becklespinax  
IT - Becklespinax  
ES - Becklespinax  
PT - Becklespinax  
DE - Becklespinax



pg 035

● 88334

**EN - Sarcosuchus**  
NL - Sarcosuchus  
FR - Sarcosuchus  
IT - Sarcosuchus  
ES - Cocodrilo Emperador  
PT - Sarcosuchus  
DE - Sarcosuchus



● 88139

**EN - Hydrotherosaurus**  
NL - Hydrotherosaurus  
FR - Hydrotherosaure  
IT - Hydrotherosaurus  
ES - Hydrotherosaurus  
PT - Hidroterossauro  
DE - Hydrotherosaurus



● 88320

**EN - Tylosaurus**  
NL - Tylosaurus  
FR - Tylosaure  
IT - Tylosaurus  
ES - Tylosaurus  
PT - Tilossauro  
DE - Tylosaurus



● • 88237

**EN - Liopleurodon**

NL - Liopleurodon

FR - Liopleurodon

IT - Liopleurodon

ES - Liopleurodon

PT - Liopleurodon

DE - Liopleurodon



pg 037



**New**

June  
2011

● • 88489

**EN - Attenborosaurus**

NL - Attenborosaurus

FR - Attenborosaure

IT - Attenborosauro

ES - Attenborosaurus

PT - Attenborosauro

DE - Attenborosaurus

COLLECTA

● • 88401

**EN - Camptosaurus**  
NL - Camptosaurus  
FR - Camptosaure  
IT - Camptosauro  
ES - Camptosaurus  
PT - Camptossauro  
DE - Camptosaurus



● • 88137

**EN - Dilophosaurus**  
NL - Dilophosaurus  
FR - Dilophosaure  
IT - Dilophosaurus  
ES - Dilophosaurus  
PT - Dilofossauro  
DE - Dilophosaurus



● • 88224

**EN - Nothronychus**  
NL - Nothronychus  
FR - Nothronychus  
IT - Nothronychus  
ES - Nothronychus  
PT - Nothronychus  
DE - Nothronychus



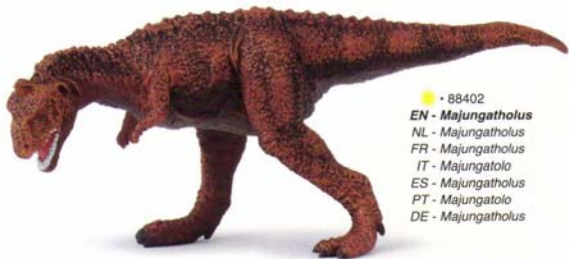
• 88316

**EN - Chasmosaurus**  
NL - Chasmosaurus  
FR - Chasmosaure  
IT - Chasmosaurus  
ES - Chasmosaurus  
PT - Chasmosauro  
DE - Chasmosaurus



• 88402

**EN - Majungatholus**  
NL - Majungatholus  
FR - Majungatholus  
IT - Majungatolo  
ES - Majungatholus  
PT - Majungatolo  
DE - Majungatholus



pg 039

• 88061

**EN - Agustinia**  
NL - Agustinia  
FR - Agustinia  
IT - Agustinia  
ES - Agustinia  
PT - Agustinia  
DE - Agustinia





• 88141

**EN - Parasaurolophus**

NL - Parasaurolophus

FR - Parasaurolophus

IT - Parasaurolophus

ES - Parasaurolophus

PT - Parasaurolopho

DE - Parasaurolophus



• 88388

**EN - Edmontonia**

NL - Edmontonia

FR - Edmontonia

IT - Edmontonia

ES - Edmontonia

PT - Edmontonia

DE - Edmontonia

• 88306

**EN - Wuerhosaurus**

NL - Wuerhosaurus

FR - Wuerhosaur

IT - Wuerhosaurus

ES - Wuerhosaurus

PT - Wuerhosaurus

DE - Wuerhosaurus



● 88355  
**EN - Achelousaurus**  
NL - Achelousaurus  
FR - Achelousaure  
IT - Achelousaurus  
ES - Achelousaurus  
PT - Achelousaurus  
DE - Achelousaurus



● 88107  
**EN - Baryonyx**  
NL - Baryonyx  
FR - Baryonyx  
IT - Baryonyx  
ES - Baryonyx  
PT - Baryonyx  
DE - Baryonyx



pg 041

● 88145  
**EN - Iguanodon**  
NL - Iguanodon  
FR - Iguanodon  
IT - Iguanodon  
ES - Iguanodon  
PT - Iguanodon  
DE - Iguanodon





• 88339

**EN - Muttaburrasaurus**  
NL - Muttaburrasaurus  
FR - Muttaburrasaur  
IT - Muttaburrasaurus  
ES - Muttaburrasaurus  
PT - Mutaburrassauro  
DE - Muttaburrasaurus



• 88106

**EN - Neovenator**  
NL - Neovenator  
FR - Neovenator  
IT - Neovenator  
ES - Neovenator  
PT - Neovenator  
DE - Neovenator



• 88254

**EN - Alioramus**  
NL - Alioramus  
FR - Alioramus  
IT - Alioramus  
ES - Aliosaurus  
PT - Alioramo  
DE - Alioramus



• 88225

**EN - Olorotitan**

NL - Olorotitan

FR - Olorotitan

IT - Olorotitan

ES - Olorotitan

PT - Olorotitan

DE - Olorotitan



• 88318

**EN - Corythosaurus**

NL - Corythosaurus

FR - Corythosaure

IT - Corythosaurus

ES - Corythosaurus

PT - Coritossauro

DE - Corythosaurus



pg 043



• 88223

**EN - Lexovisaurus**

NL - Lexovisaurus

FR - Lexovisaure

IT - Lexovisaurus

ES - Lexovisaurus

PT - Lexovissauro

DE - Lexovisaurus



• 88307

EN - *Gigantoraptor*  
NL - *Gigantoraptor*  
FR - *Gigantoraptor*  
IT - *Gigantoraptor*  
ES - *Gigantoraptor*  
PT - *Gigantoraptor*  
DE - *Gigantoraptor*



• 88240

EN - *Rebbachisaurus*  
NL - *Rebbachisaurus*  
FR - *Rebbachisaure*  
IT - *Rebbachisaurus*  
ES - *Rebbachisaurus*  
PT - *Rebbachisaurus*  
DE - *Rebbachisaurus*



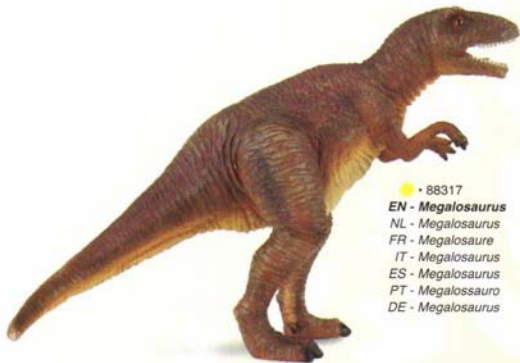
• 88373

EN - *Tsintaosaurus*  
NL - *Tsingtaosaurus*  
FR - *Tsingtaosaure*  
IT - *Tsintaosauro*  
ES - *Tsintaosaurus*  
PT - *Tsintaosaurus*  
DE - *Tsintaosaurus*

• 88252  
**EN - Dracorex**  
NL - Dracorex  
FR - Dracorex  
IT - Dracorex  
ES - Dracorex  
PT - Dracorex  
DE - Dracorex



• 88411  
**EN - Oviraptor**  
NL - Oviraptor  
FR - Oviraptor  
IT - Oviraptor  
ES - Oviraptor  
PT - Oviraptor  
DE - Oviraptoren



• 88317  
**EN - Megalosaurus**  
NL - Megalosaurus  
FR - Megalosaure  
IT - Megalosaurus  
ES - Megalosaurus  
PT - Megalossauro  
DE - Megalosaurus



pg 045



• 88199

**EN - Triceratops Baby**

NL - Triceratops Baby

FR - Bébè Triceratops

IT - Triceratops Baby

ES - Cria de Triceratops

PT - Filhote de Triceratops

DE - Triceratops Junges



• 88198

**EN - Stegosaurus Baby**

NL - Stegosaurus Baby

FR - Bébè Stegosaure

IT - Stegosaurus Baby

ES - Cria de Stegosaurus

PT - Filhote de Estegossauro

DE - Stegosaurus Junges



• 88201

**EN - Spinosaurus Baby**

NL - Spinosaurus Baby

FR - Bébè Spinozaure

IT - Spinosaurus Baby

ES - Cria de Spinosaurus

PT - Filhote de Espinossauro

DE - Spinosaurus Junges



● 88200

**EN - Brachiosaurus Baby**  
NL - Brachiosaurus Baby  
FR - Béb  Brachiosaure  
IT - Brachiosaurus Baby  
ES - Cria de Brachiosaurus  
PT - Filhote de Braquiossauro  
DE - Brachiosaurus Junges



● 88202

**EN - Parasaurolophus Baby**  
NL - Parasaurolophus Baby  
FR - B b  Parasaurolophus  
IT - Parasaurolophus Baby  
ES - Cria de Parasaurolophus  
PT - Filhote de Parassauroloto  
DE - Parasaurolophus Junges

● 88197

**EN - Tyrannosaurus Rex Baby**  
NL - Tyrannosaurus Baby  
FR - B b  Tyrannosaure  
IT - Tyrannosaurus Rex Baby  
ES - Cria de Tyrannosaurus Rex  
PT - Filhote de Tiranossauro Rex  
DE - Tyrannosaurus Rex Junges



pg 047



• 89332

**EN - 12" Cycad Tree - Deluxe**

NL - Palmvarens - Deluxe

FR - Cycadophyta - Deluxe

IT - Cycadophyta - Deluxe

ES - Cycadophyta - Deluxe

PT - Cicadácea com 30,48 cm - Versão Luxo

DE - Palmfarn (30 cm hoch) - Deluxe

New

April  
2011



• 89280

**EN - First Toe of Tyrannosaurus Rex Boxed Set**

NL - Grote teen van T-Rex

FR - Gros orteil de T-Rex

IT - Dito del Tirannosauro Rex - Set Confezione

ES - Dedo del Pie de T-Rex

PT - Garra de T-Rex

DE - T-Rex grosse Zehe



New

April  
2011

• 89281

**EN - Tooth of Tyrannosaurus Rex Boxed Set**

NL - Tand van T-Rex

FR - Dent de T-Rex

IT - Dente del Tirannosauro Rex - Set Confezione

ES - Diente de T-Rex

PT - Dente de T-Rex

DE - T-Rex Zahn

pg 049

New

April  
2011



• 89283

**EN - Tooth of Triceratops Boxed Set**

NL - Tand van Triceratops

FR - Dent de Triceratops

IT - Dente di Triceratopi - Set Confezione

ES - Diente de Triceratops

PT - Dent de Triceratops

DE - Triceratops Zahn



New

April  
2011



• 89284

**EN - Foot Replica of Tyrannosaurus Rex Boxed Set**

NL - Voet replica van Tyrannosaurus

FR - Réplique du pied de Tyrannosaure

IT - Riproduzione del Piede del Tirannosauro Rex - Set Confezione

ES - Pie de Tyrannosaurus

PT - Replica de pata de Tyrannosauro

DE - Tyrannosaurus Fußnachbildung



New

April  
2011



• 89285

**EN - Foot Replica of Velociraptor Boxed Set**

NL - Voet replica van Velociraptor

FR - Réplique du pied de Velociraptor

IT - Riproduzione del Piede del Velociraptor - Set Confezione

ES - Pie de Velociraptor

PT - Replica de pata de Velociraptor

DE - Velociraptor Fußnachbildung

New

April  
2011



• 89286

**EN - Dorsal Plate of Stegosaurus Boxed Set**

NL - Rugschild van Stegosaurus

FR - Carapace de Stegosaure

IT - Tergite dello Stegosauro - Set Confezione

ES - Placa Dorsal de Stegosaurus

PT - Placa Dorsal de Stegosauro

DE - Stegosaurus Rückenwirbel





New  
April  
2011

• 89287

**EN - Tooth & Tail Club of Ankylosaurus Boxed Set**

NL - Tand & staart van Ankylosaurus

FR - Dent & queue d'Ankylosaurus

IT - Dente & Coda Cucciolo di Anchilosauro - Set Confezione

ES - Diente y Cola de Ankylosaurus

PT - Dente e osso da cauda de Ankylosauro

DE - Ankylosaurus Zahn und Schwanzkeule

New  
April  
2011



• 89288

**EN - Tooth & Finger Claw of Allosaurus Boxed Set**

NL - Tand & Vingerklauw van Allosaurus

FR - Dent & Pince d'Allosaure

IT - Dente & Artiglio della Mano dell'Allosauro - Set Confezione

ES - Diente y Garra de Allosaurus

PT - Dente e Garra de Alosauro

DE - Allosaurus Zahn und Vorderfußkralle



pg 051



New  
April  
2011



• 89289

**EN - Hand Claw & Hand Replica of Tyrannosaurus Rex Boxed Set**

NL - Handklauw & hand replica van Tyrannosaurus

FR - Patte & réplique de la patte de Tyrannosaure

IT - Artiglio della Mano & Riproduzione Mano del Tyrannosauro Rex - Set Confezione

ES - Garra y Mano de Tyrannosaurus

PT - Garra e réplica da pata superior de Tyrannosauro

DE - Tyrannosaurus Vorderfusskralle und Handnachbildung

COLLECTA

**New**

*April  
2011*



• 89282

**EN - Hooked Thumb Claw of Baryonyx Boxed Set**

NL - Gehaakt duimklauw van Baryonyx

FR - Griffe de Baryonyx

IT - Hooked Thumb Claw of Baryonyx Box Set

ES - Pulgar en forma de Garra de Baryonyx

PT - Garra curva de Baryonyx

DE - Baryonyx gebogene Daumenkralle



**New**

*April  
2011*

• 89290

**EN - Tooth of Spinosaurus Boxed Set**

NL - Tand van Spinosaurus

FR - Dent de Spinozaure

IT - Dente dello Spinosauo - Set Confezione

ES - Diente de Spinosaurus

PT - Dente de Spinosauo

DE - Spinosaurus Zahn

**New**

*April  
2011*



• 89291

**EN - Tooth & Foot Claw of Velociraptor Boxed Set**

NL - Tand & voetklauw van Velociraptor

FR - Dent & griffe de Velociraptor

IT - Dente & Artiglio del Piede del Velociraptor - Set Confezione

ES - Diente y Garra de Velociraptor

PT - Dente e Garra de membro inferior de Velociraptor

DE - Velociraptor Zahn und Hinterfußkralle



# ***HORSES***





• 88450

**EN - Tennessee Walking Horse**

**Stallion Bay Pinto**

NL - Tennessee Walking Horse Hengst

Roodbruin Gevlekt

FR - Etalon Tennessee Walking Horse

Bai Taché

IT - Cavalluccio Mobile del Tennessee

Stallone Baio Pinto

ES - Caballo Tennessee Walking Castaño

Rojizo con manchas

PT - Garanhão Tennesse Walking Horse

- Pinto Castanho

DE - Pinto Tennessee Walker Hengst

**New**

*Jan 2011*



• 88452

**EN - Tennessee Walking Horse Foal Black**

NL - Tennessee Walking Horse Veulen Zwart

FR - Poulain Tennessee Walking Horse Noir

IT - Cavalluccio Mobile del Tennessee Puledro Colore Nero

ES - Potro Tennessee Walking Negro

PT - Potro Tennesse Walking Horse - Preto

DE - Graues Tennessee Walker Fohlen

**New**

*Jan 2011*



• 88438

**EN - Barock Pinto Stallion**

NL - Hengst Barock Pinto

FR - Étalon Barock Pinto

IT - Stallone Barock Pinto

ES - Semental Lusitano Barroco

PT - Garanhão Lusitano Barroco

DE - Barock Pinto hengst

• 88449

EN - Tennessee Walking Horse Stallion  
Golden Palomino

New  
Jan 2011

NL - Tennessee Walking Horse Hengst Goudkleurig  
FR - Etalon Tennessee Walking Horse Palomino  
IT - Cavalluccio Mobile del Tennessee Stallone  
Golden Palomino  
ES - Caballo Tennessee Walking Palomino  
PT - Garanhão Tennesse Walking Horse - Palomino  
DE - Palomino Tennessee Walker Hengst



New

Jan 2011

• 88451

EN - Tennessee Walking Horse Foal Chestnut

NL - Tennessee Walking Horse Veulen Kastanjebruin  
FR - Poulain Tennessee Walking Horse Marron  
IT - Cavalluccio Mobile del Tennessee Puledro Color Castagna  
ES - Potro Tennessee Walking Castaño  
PT - Potro Tennesse Walking Horse - Lazão  
DE - Braunes Tennessee Walker Fohlen



pg 055

• 88439

EN - Friesian Stallion  
NL - Hengst Fries paard  
FR - Étalon Frison  
IT - Stallone Frisone  
ES - Semental Frisón  
PT - Garanhão Frisio  
DE - Friesse hengst





**New**

*Jan  
2011*

• 88475

**EN - Arabian Mare Golden Chestnut**

NL - Arabier Merrie Kastanjebruin

FR - Jument Arabe Marron

IT - Cavallo Arabico Color Castagna

ES - Yegua Árabe Castaño

PT - Égua Árabe castanha

DE - Braune Araberstute



**New**

*Jan  
2011*

• 88476

**EN - Arabian Mare Grey**

NL - Arabier Merrie Grijs

FR - Jument Arabe Gris

IT - Cavallo Arabico Grigio

ES - Yegua Árabe Gris

PT - Égua Árabe ruça

DE - Grauschimmel Araberstute



• 88431

**EN - Hanoverian Stallion Bay**  
NL - Hannoveriaan Hengst Voskleurig  
FR - Étalon Hanovrien Bai  
IT - Stallone Hannover - Baio  
ES - Semental Hannoveriano Bayo  
PT - Garanhão Hanoveriano Baio  
DE - Hannoveraner hengst



pg 057



• 88432

**EN - Hanoverian Stallion Chestnut**  
NL - Hannoveriaan Hengst Kastanjebruin  
FR - Étalon Hanovrien Marron  
IT - Stallone Hannover - Sauro  
ES - Semental Hannoveriano Castaño  
PT - Garanhão Hanoveriano Alazão  
DE - Hannoveraner hengst

**New**

*April  
2011*



• 88501

EN - Lusitano Stallion Buckskin  
NL - Lusitano hengst bruingeel  
FR - Étalon Lusitanien Mordoré  
IT - Stallone Lusitano Color Daino  
ES - Caballo Lusitano - Color Ante  
PT - Garanhão lusitano  
DE - Lusitano Hengst - Buckskin

**New**

*April  
2011*



• 88502

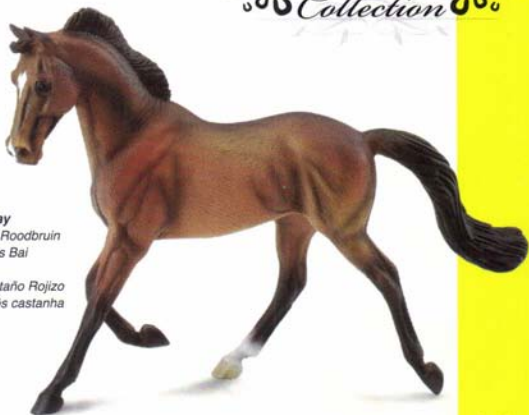
EN - Lusitano Stallion Grey  
NL - Lusitano Grijs  
FR - Lusitanien Gris  
IT - Stallone Lusitano Grigio  
ES - Caballo Lusitano - Gris  
PT - Cavalo Lusitano Ruço  
DE - Lusitano - Grau

New

June  
2011

• 88477

- EN - Thoroughbred Mare Bay**  
NL - Engelse Volbloedmerrie Roodbruin  
FR - Jument Pur Sang Anglais Bai  
IT - Cavallo Baio di Razza  
ES - Yegua Pura Sangre Castaño Rojizo  
PT - Égua Puro Sangue Inglês castanha  
DE - Braune Vollblutstute



pg 059

New

June  
2011

• 88478

- EN - Thoroughbred Mare Black**  
NL - Engelse Volbloedmerrie Zwart  
FR - Jument Pur Sang Anglais Noir  
IT - Cavallo Nero di Razza  
ES - Yegua Pura Sangre Negra  
PT - Égua Puro Sangue Inglês preta  
DE - Schwarze Vollblutstute



**New**

*June  
2011*

• 88464

**EN - Andaluian Stallion Grey**  
NL - Andalusische Hengst Grijs  
FR - Etalon Andalou Gris  
IT - Stallone Grigio Andaluso  
ES - Caballo Andaluz Gris  
PT - Garanhão Andaluz Ruço  
DE - Grauschimmel Andalusier Hengst



**New**

*June  
2011*

• 88463

**EN - Andaluian Stallion Bay**  
NL - Andalusische Hengst Roodbruin  
FR - Etalon Andalou Bai  
IT - Stallone Baio Andaluso  
ES - Caballo Andaluz Castaño Rojizo  
PT - Garanhão Andaluz Castanho  
DE - Brauner Andalusier Hengst





• 88436

**EN - Chestnut Appaloosa Stallion**  
NL - Hengst Appaloosa Kastanjebruin  
FR - Étalon Appaloosa Marron  
IT - Stallone Appaloosa - Sauro  
ES - Semental Appaloosa Castaño  
PT - Garanhão Appaloosa Alazão  
DE - Appaloosa hengst Fuchs



• 88437

**EN - Black Appaloosa Stallion**  
NL - Hengst Appaloosa Zwart  
FR - Étalon Appaloosa Noir  
IT - Stallone Appaloosa - Nero  
ES - Semental Appaloosa Negro  
PT - Garanhão Appaloosa Negro  
DE - Appaloosa hengst schwarz



pg 061

• 88228

**EN - Lipizzaner Stallion**  
NL - Lippizaner Hengst  
FR - Étalon Lipizzaner  
IT - Stallion Di Lipizzaner  
ES - Semental Lippizaner  
PT - Garanhão Lippizaner  
DE - Lippizanerhengst



• 88368

**EN - Lipizzaner Foal-Walking**  
NL - Lippizanerpaard - Wandelend  
FR - Lipizzan - Se Promenant  
IT - Puledro Lipizzano al Trotto  
ES - Potro Lipizzaner - Caminando  
PT - Potro Lipizzaner - Caminhando  
DE - Lippizanerfohlen - Gehend



• 88105

**EN - Thoroughbred Mare**  
NL - Engels Volbloedpaard  
FR - Pur Sang Anglais  
IT - Thoroughbred  
ES - Yegua Purasangre  
PT - Égua Puro Sangue  
DE - Vollblutstute



• 88229

**EN - Lipizzaner Mare**  
NL - Lipizzaner Merrie  
FR - Jument Lipizzaner  
IT - Cavalla Di Lipizzaner  
ES - Yegua Lipizzaner  
PT - Égua Lipizzaner  
DE - Lipizzanerstute



• 88369

**EN - Lipizzaner Foal-Lying**  
NL - Lipizzanerpaard - liggend  
FR - Lipizzan - Se pPromenant  
IT - Puledro Lipizzano Seduto  
ES - Potro Lipizzaner - Acostado  
PT - Potro Lipizzaner - Deitado  
DE - Lipizzanerfohlen - Liegend



• 88245

**EN - Thoroughbred Foal-Running**  
NL - Volbloed Veulen - Het lopen  
FR - Pur Sang Poulain - Fonctionnement  
IT - Foal del Thoroughbred - Funzionare  
ES - Potro Purasangre - Corriendo  
PT - Potro Puro Sangue - Correndo  
DE - Vollblutfohlen - galoppierend



• 88244

**EN - Thoroughbred Foal-Standing**  
NL - Volbloed Veulen - Rechtopstaand  
FR - Pur Sang Poulain - Debout  
IT - Foal del Thoroughbred - in Piedi  
ES - Potro Purasangre - de Pie  
PT - Potro Puro Sangue - Em Pé  
DE - Vollblutfohlen - stehend



pg 063





• 88310

**EN - Haflinger Mare**  
NL - Haflinger Merrie  
FR - Jument Haflinger  
IT - Cavalla Avelignese  
ES - Yegua Haflinger  
PT - Égua Haflinger  
DE - Haflingerstute

• 88311

**EN - Haflinger Foal-Grazing**  
NL - Haflinger Veulen - Grazend  
FR - Haflinger Poulain - Paissant  
IT - Puledro Avelignese - Che Bruca  
ES - Potro Haflinger - Paciendo  
PT - Égua Haflinger - Pastando  
DE - Haflingerfohlen - grasend



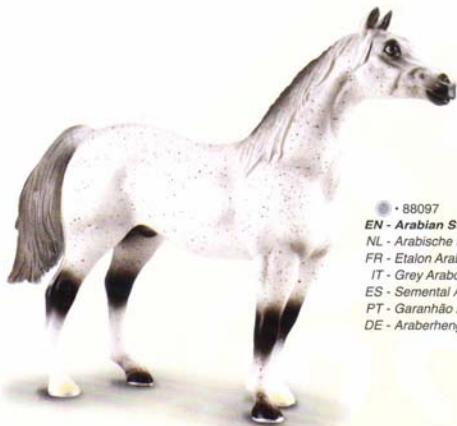
• 88312

**EN - Haflinger Foal-Looking Back**  
NL - Haflinger Veulen - Rechtopstaand  
FR - Haflinger Poulain - Debout  
IT - Puledro Avelignese - Che Guardia Indietro  
ES - Potro Haflinger - Mirando Atrás  
PT - Égua Haflinger - Olhando para Trás  
DE - Haflingerfohlen - zurückblickend



• 88100

**EN - Arabian Stallion Black**  
NL - Arabische Hengst Zwart  
FR - Etalon Arabe Noir  
IT - Nero Arabo dello Stallion  
ES - Semental Árabe Negro  
PT - Garanhão Árabe Negro  
DE - Araberhengst schwarz



• 88097

**EN - Arabian Stallion Dapple Grey**  
NL - Arabische Hengst Grijs Gevlekt  
FR - Etalon Arabe Tacheté Gris  
IT - Grey Arabo dello Stallion Dapple  
ES - Semental Árabe con Pintas  
PT - Garanhão Árabe Malhado Cinza  
DE - Araberhengst Apfelschimmel



pg 065



• 88149

**EN - Shire Horse Black Pinto**

NL - Zwart Engels Trekpaard

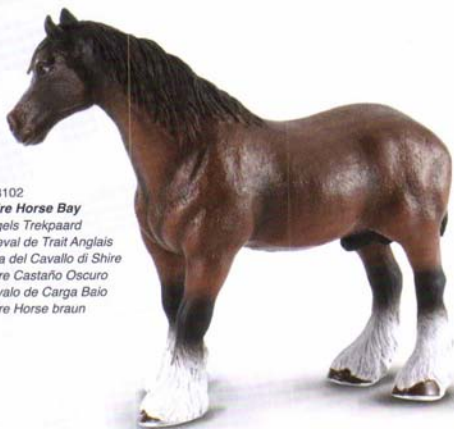
FR - Cheval de Trait Anglais Noir

IT - Nero Painto del Cavallo di Shire

ES - Shire Negro

PT - Cavalo de Carga Negro Pinto

DE - Shire Horse Schwarzscheck



• 88102

**EN - Shire Horse Bay**

NL - Engels Trekpaard

FR - Cheval de Trait Anglais

IT - Baia del Cavallo di Shire

ES - Shire Castaño Oscuro

PT - Cavalo de Carga Baio

DE - Shire Horse braun



• 88149

**EN - Shire Horse Black Pinto**  
NL - Zwart Engels Trekpaard  
FR - Cheval de Trait Anglais Noir  
IT - Nero Painto del Cavallo di Shire  
ES - Shire Negro  
PT - Cavalo de Carga Negro Pinto  
DE - Shire Horse Schwarzscheck

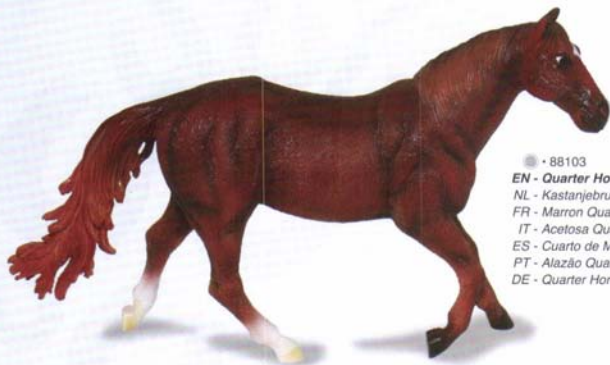


pg 067



• 88151

**EN - Shire Horse Brown**  
NL - Bruin Engels Trekpaard  
FR - Cheval de Trait Anglais Brun  
IT - Colore Marrone del Cavallo di Shire  
ES - Shire Marrón  
PT - Cavalo de Carga Castanho  
DE - Shire Horse dunkelbraun



● • 88103

**EN - Quarter Horse Chestnut**  
**NL - Kastanjebruin Renpony**  
**FR - Marron Quarte de-Cheval**  
**IT - Acetosa Quarto del Cavallo**  
**ES - Cuarto de Milla Castaño**  
**PT - Alazão Quarto de Milha**  
**DE - Quarter Horse Fuchs**



● • 88159

**EN - Quarter Horse Dapple Grey**  
**NL - Grijs Gevlekte Renpony**  
**FR - Le Cheval Quart Tachete Gris**  
**IT - Grey Quarto del Cavallo**  
**ES - Cuarto de Milla con Manchas Grises**  
**PT - Cavalo Quarto de Milha Malhado Cinza**  
**DE - Quarter Horse Apfelschimmel**



• 88160

**EN - Quarter Horse Buckskin**

NL - Renpony Izabel

FR - Isabelle Daim Quarte de Cheval

IT - Buckskin Quarto del Cavallo

ES - Cuarto de Milla Color Ante

PT - Cavalo Quarto de Milha Amarelo

DE - Quarter Horse Buckskin



pg 069



• 88161

**EN - Quarter Horse Grullo**

NL - Renpony Grullo

FR - Cheval Quart Grullo

IT - Cavallo Quarto Grullo

ES - Cuarto de Milla Gris Claro

PT - Cavalo Quarto de Milha Baio

DE - Quarter Horse Graufalbe



● • 88157

**EN - Mustang Bay**  
NL - Voskleurig Amerikaans Prairiepaard  
FR - Mustang Americain Bai  
IT - Baia del Mustang  
ES - Mustang Castaño Oscuro  
PT - Mustang Baio  
DE - Mustang braun



● • 88156

**EN - Mustang Dun Appaloosa**  
NL - Grijsbruin Gevlekt Amerikaans Prairiepaard  
FR - Mustang Americain Tacheté Bis  
IT - Mustang Appaloosa Dun  
ES - Mustang Pardo con Manchas  
PT - Mustang Baio Appaloosa  
DE - Mustang Appaloosa Falbe



• 88158

**EN - Mustang Grey**

NL - Grijs Amerikaans Prairiepaard

FR - Mustang Americain Gris

IT - Grey del Mustang

ES - Mustang Gris

PT - Mustang Cinza

DE - Mustang grau



• 88101

**EN - Mustang Chestnut Pinto**

NL - Kastanjebruin Amerikaans Prairiepaard

FR - Mustang Americain Marron

IT - Castagna del Mustang

ES - Mustang Castaño

PT - Mustang Alazão Pinto

DE - Mustang Fuchsscheck



pg 071



• 88153

**EN - Clydesdale Brown**  
NL - Clydesdale Bruin  
FR - Brun de Clydesdale  
IT - Colore Marrone di Clydesdale  
ES - Clydesdale Marrón  
PT - Clydesdale Marrom  
DE - Clydesdale braun



• 88154

**EN - Clydesdale Dapple Grey**  
NL - Clydesdale Grijs  
FR - Gris de Clydesdale  
IT - Grey di Clydesdale  
ES - Clydesdale Gris con Pintas  
PT - Clydesdale Malhado Cinza  
DE - Clydesdale Apfelschimmel

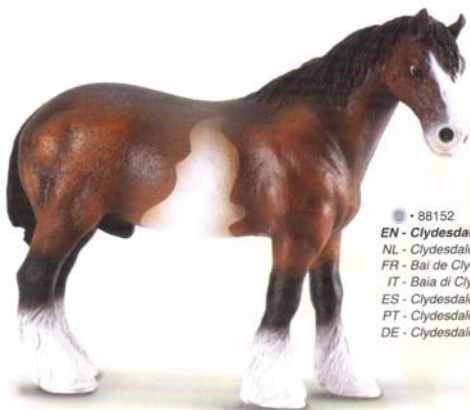


• 88155

**EN - Clydesdale Grullo Sabino**  
**NL - Clydesdale Grullo Sabino**  
**FR - Clydesdale Grullo Sabino**  
**IT - Clydesdale Grullo Sabino**  
**ES - Clydesdale Gris Pardo**  
**PT - Clydesdale Sabino Grullo**  
**DE - Clydesdale Sabino Graufalbe**



pg 073



• 88152

**EN - Clydesdale Bay Sabino**  
**NL - Clydesdale Voskleurig**  
**FR - Bai de Clydesdale**  
**IT - Baia di Clydesdale**  
**ES - Clydesdale Castaño y Blanco**  
**PT - Clydesdale Sabino Baio**  
**DE - Clydesdale Sabino braun**



• 88389

**EN - Clydesdale Mare Grey**

NL - Clydesdale Grijs

FR - Clydesdale Gris

IT - Cavallo Clydesdale Grigio

ES - Yegua Clydesdale Gris

PT - Égua da raça Clydesdale Cinza

DE - Clydesdale Stute grau



• 88390

**EN - Clydesdale Mare Bay**

NL - Clydesdale Rood

FR - Clydesdale Rouge

IT - Cavallo Clydesdale Baio

ES - Yegua Clydesdale Bayo

PT - Égua da raça Clydesdale Baio

DE - Clydesdale Stute braun



• 88164

**EN - Shetland Pony Chestnut**

NL - Kastanjebruine Shetland Pony

FR - Poney Shetland Marron

IT - Pony di Shetland Chestnut

ES - Pony de las Shetland Castaño

PT - Pônei Alazão Shetland

DE - Shetland-Pony Fuchs

• 88163

**EN - Shetland Pony White**

NL - Wit Shetland Pony

FR - Poney Shetland Blanc

IT - Bianco del Pony di Shetland

ES - Pony de las Shetland Blanco

PT - Pônei Shetland Branco

DE - Shetland-Pony weiss



• 88162

**EN - Shetland Pony Black**

NL - Zwarte Shetland Pony

FR - Poney Shetland Noir

IT - Nero del Pony di Shetland

ES - Pony de las Shetland Negro

PT - Pônei Shetland Negro

DE - Shetland-Pony schwarz

• 88104

**EN - Shetland Pony Palomino**

NL - Shetland Pony Palomino

FR - Poney Shetland Palomino

IT - Palomino del Pony di Shetland

ES - Pony de las Shetland Marrón Claro

PT - Pônei Shetland Palomino

DE - Shetland-Pony Isabell



pg 075

• 88170

**EN - Corral Fence**

NL - Omheining Voor Paarden

FR - Palissade

IT - Recinto

ES - Valla

PT - Cerca

DE - Zaun



• 88169

**EN - Hay Bale**

NL - Baal Hooi

FR - Foin

IT - Balla di fieno

ES - Bala de heno

PT - Feno

DE - Heu

• 88171

**EN - Feeding Trough**

NL - Voerbak

FR - Mangeoire

IT - Mangiatoia

ES - Abrevadero

PT - Calha

DE - Abflussrinne



• 89333

**Stable Playset & Accessories**



# ***FARM LIFE***





New  
Jan 2011

• 88481

EN - Friesian Cow  
NL - Friese Koe  
FR - Vache Frisonne  
IT - Mucca frisona  
ES - Vaca Friesian (Blanca y Negra)  
PT - Vaca Frisia  
DE - Friesische Kuh

• 88484

EN - Friesian Calf-Suckling  
NL - Fries kalf zuigend  
FR - Veau Frison tétant  
IT - Vitello frisona - Che Allatta  
ES - Ternero Friesian  
(Blanca y Negra) - Mamando  
PT - Vitela Frisia a mamar  
DE - Friesisches Kalb-säugend



New

Jan 2011



New

Jan 2011

• 88482

EN - Friesian Bull  
NL - Friese stier  
FR - Taureau Frison  
IT - Toro frisona  
ES - Toro Friesian  
(Blanca y Negra)  
PT - Boi Frisia  
DE - Friesischer Bulle



New

Jan 2011

• 88483

EN - Friesian Calf-Standing  
NL - Fries kalf rechtopstaand  
FR - Veau Frison debout  
IT - Vitello frisona - In Piedi  
ES - Ternero Friesian  
(Blanca y Negra) - de Pie  
PT - Vitela Frisia de pé  
DE - Friesisches Kalb-stehend

• 88348

**EN - Pig Family - Deluxe**

NL - Varkensfamilie - Deluxe

FR - Famille de Cochons - Deluxe

IT - Famiglia Maiali - Deluxe

ES - Familia de Cerditos - Deluxe

PT - Família Porco - Versão de Luxo

DE - Schweinefamilie - Deluxe



• 88006

**EN - Sow**

NL - Zeug

FR - Truie

IT - Seminare, Scrofa

ES - Cerda

PT - Porca

DE - Sau

• 88063

**EN - Piglet-Standing**

NL - Biggetje - Rechtopstaand

FR - Cochonnet - Debout

IT - Maialino - in Piedi

ES - Cerdito - de Pie

PT - Leitão - Em Pé

DE - Ferkel - stehend



• 88345

**EN - Piglet-Sitting**

NL - Biggetje - Zittend

FR - Cochonnet - Assis

IT - Maialino - Seduto

ES - Cerdito - Sentado

PT - Leitão - Sentado

DE - Ferkel - sitzend



• 88344

**EN - Piglet-Smelling**

NL - Biggetje - Snuffelend

FR - Cochonnet - Flairant

IT - Maialino - Che Annusa

ES - Cerdito - Olfisqueando

PT - Leitão - Cheirando

DE - Ferkel - riechend



• 88346

**EN - Piglet-Eating**

NL - Biggetje - Grazend

FR - Cochonnet - Paissant

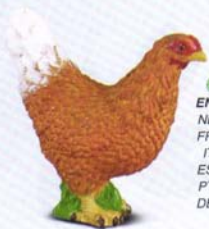
IT - Maialino - Grufolante

ES - Cerdito - Comiendo

PT - Leitão - Comendo

DE - Ferkel - fressend

pg 079



• 88005  
**EN - Hen**  
NL - Kip  
FR - Poule  
IT - Gallina  
ES - Gallina  
PT - Galinha  
DE - Huhn



• 88480  
**EN - Chicks Hatching**  
NL - Piepende Kuikens  
FR - Poussins écolorants  
IT - Pulcini che Schiudono  
ES - Polluelos Saliendo del Huevo  
PT - Pintos a nascerem  
DE - Küken-schlüpfend

**New**

June  
2011



• 88378  
**EN - Mallard Duck-Male**  
NL - Wilde eend - Mannelijk  
FR - Canard Colvert - Mâle  
IT - Anatra Selvatica - Maschio  
ES - Pato Real - Macho  
PT - Pato Real - Macho  
DE - Stockente - Männchen



• 88379  
**EN - Mallard Duck-Female**  
NL - Wilde eend - Vrouwelijk  
FR - Canard Colvert - Femelle  
IT - Anatra selvatica - Femmina  
ES - Pato Real - Fêmea  
PT - Pato Real - Fêmea  
DE - Stockente - Weibchen



• 88128

**EN - White Cockerel**  
NL - Jonge Haan Wit  
FR - Coquelet Blanc  
IT - Bianco del Galletto  
ES - Gallo Bianco  
PT - Galo Branco  
DE - Weisser Junghahn



• 88004

**EN - Cockerel**  
NL - Haant  
FR - Coq  
IT - Rubinetto  
ES - Gallo  
PT - Galo  
DE - Junghahn



• 88479

**EN - Chicks**  
NL - Groep kuikens  
FR - Poussins en groupe  
IT - Pulcini  
ES - Grupo de Polluelos  
PT - Pintos grupo  
DE - Küken in Gruppe

**New**

Jan  
2011

• 88007

**EN - White Duck**  
NL - Witte Eend  
FR - Canard Blanc  
IT - Anatra Bianca  
ES - Pato Blanco  
PT - Pato Branco  
DE - Weisse Ente



• 88500

**EN - Ducklings**  
NL - Eendenkuikens  
FR - Canetons  
IT - Anatroccoli  
ES - Grupo de Patitos  
PT - Patos em Grupo  
DE - Entenküken in Gruppe

**New**

April  
2011

pg 081

COLLECTA



• 88211

**EN - Mute Swan**

NL - Zwaan

FR - Cygne

IT - Swan Muto

ES - Cisne

PT - Cisne Mudo

DE - Höckerschwan



• 88209

**EN - Peacock**

NL - Pauw

FR - Paon

IT - Peacock

ES - Pavo Real

PT - Pavão

DE - Pfau



• 88377

**EN - Mountain Goat Nanny**

NL - Berggeit Nanny

FR - Chamois Nanny

IT - Capra delle nevi Femmina

ES - Cabra montés Hembra

PT - Cabrito Montês Cabra

DE - Bergziege Weibchen

**New**

*June  
2011*

• 88507

**EN - Black Angus Bull**  
**NL - Angus Stier Zwart**  
**FR - Taureau Angus Noir**  
**IT - Toro Nero**  
**ES - Toros Angus Negro**  
**PT - Boi Angus Preto**  
**DE - Black Angus Stier**



**New**

*June  
2011*

• 88508

**EN - Red Angus Bull**  
**NL - Angus Stier Rood**  
**FR - Taureau Angus Rouge**  
**IT - Toro Rosso**  
**ES - Toros Angus Rojo**  
**PT - Boi Angus Vermelho**  
**DE - Red Angus Stier**



• 88376

**EN - Mountain Goat Billy**  
**NL - Berggeit Billy**  
**FR - Chamois Billy**  
**IT - Capra delle nevi Maschio**  
**ES - Cabra montés Macho**  
**PT - Cabrito montês Bode**  
**DE - Bergziege Männchen**

pg 083

• 88212  
**EN - Billy Goat**  
 NL - Bok  
 FR - Bouc  
 IT - Capra Del Billy  
 ES - Macho Cabrio  
 PT - Bode  
 DE - Geissbock



• 88010  
**EN - Border Collie**  
 NL - Border Collie  
 FR - Border Collie  
 IT - Collie di Bordo  
 ES - Collie de la Frontera  
 PT - Border Collie  
 DE - Border Collie

• 88393  
**EN - Lamb-Grazing**  
 NL - Lam - Grazend  
 FR - Agneau - Paissant  
 IT - Agnellino Che Bruca  
 ES - Carnero - Pastando  
 PT - Carneiro - Pastando  
 DE - Lamm - Grasend



• 88009  
**EN - Lamb-Standing**  
 NL - Lam - Rechtopstaand  
 FR - Agneau - Debout  
 IT - Agnello - in Piedi  
 ES - Cordero - de Pie  
 PT - Carneiro - Em Pé  
 DE - Lamm - Stehend



• 88394  
**EN - Lamb-Lying**  
 NL - Lam - Liggend  
 FR - Agneau - Couché  
 IT - Agnellino Seduto  
 ES - Carnero - Acostado  
 PT - Carneiro - Deitado  
 DE - Lamm - Liegend



• 88115  
**EN - Donkey-Grey**  
NL - Ezel - Grijs  
FR - Âne - Gris  
IT - Asino - Grigio  
ES - Burro - Gris  
PT - Burro - Cinza  
DE - Esel - grau



• 88408  
**EN - Donkey Foal-Grazing**  
NL - Ezel - Grazend  
FR - Âne - Paissant  
IT - Puledro Di Asino Che Bruca  
ES - Borrico - Pastando  
PT - Burrico - Pastando  
DE - Esellohlen - Grasend

• 88409  
**EN - Donkey Foal-Walking**  
NL - Ezel - Wandelend  
FR - Âne - Se Promenant  
IT - Puledro Di Asino Al Passo  
ES - Borrico - Andando  
PT - Burrico - Andando  
DE - Esellohlen - Gehend



• 88392  
**EN - Lamb-Looking Back**  
NL - Lam - Achteruit Kijkend  
FR - Agneau - Vue En Arrière  
IT - Agnellino Che Guarda Indietro  
ES - Carnero - Mirando Hacia Atrás  
PT - Carneiro - Olhando Para Trás  
DE - Lamm - Zurückblickend

• 88008  
**EN - Sheep**  
NL - Schaap  
FR - Mouton  
IT - Pecore  
ES - Oveja  
PT - Ovelha  
DE - Schaf



• 88234

**EN - Hereford Bull**  
NL - Hereford Stier  
FR - Taureau Hereford  
IT - Hereford Bull  
ES - Toro Hereford - Blanco y Marrón  
PT - Boi Hereford  
DE - Hereford-Stier



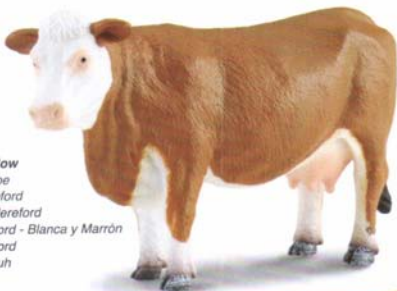
• 88236

**EN - Hereford Calf-Standing**  
NL - Hereford Kalf - Rechtopstaand  
FR - Veau Hereford - Debout  
IT - Vitello Di Hereford - in Piedi  
ES - Ternero Hereford - de Pie  
PT - Novilho Hereford - Em Pé  
DE - Hereford-Kalb - stehend



• 88235

**EN - Hereford Cow**  
NL - Hereford Koe  
FR - Vache Hereford  
IT - Mucca Di Hereford  
ES - Vaca Hereford - Blanca y Marrón  
PT - Vaca Hereford  
DE - Hereford-Kuh



• 88242

**EN - Hereford Calf-Grazing**  
NL - Het Weiden van het  
Kalf van Hereford  
FR - Veau De Hereford Frôlant  
IT - Vitello Di Hereford - Che Pasce  
ES - Ternero Hereford - Paciando  
PT - Novilho Hereford -Pastando  
DE - Hereford-Kalb - grasend





• 88380

**EN - Texas Longhorn Bull**  
NL - De Texaanse langhoorn Stier  
FR - Taureau Texas Longhorn  
IT - Toro del Texas Longhorn  
ES - Buey Tejano  
PT - Boi de Chifre Longo Texano  
DE - Texanischer Longhorn Bulle



• 88300

**EN - Spanish Black Fighting Bull**  
NL - Zwarte Vechtstier  
FR - Taureau Noir de Combat  
IT - Toro nero Spagnolo da Combattimento  
ES - Toro Español  
PT - Touro Bravo Negro Espanhol  
DE - Schwarzer Kampfstier -aus Spanien



• 88231  
**EN - Highland Bull**  
NL - Schotse Hooglanderstier  
FR - Taureau Highland  
IT - Altopiano Bull  
ES - Toro de las Highlands  
PT - Touro Highland  
DE - Schottischer Hochlandbulle

• 88232  
**EN - Highland Cow**  
NL - Schotse Hooglanderkoe  
FR - Vache Highland  
IT - Mucca Dell'Altopiano  
ES - Vaca de las Highlands  
PT - Vaca Highland  
DE - Schottische Hochlandkuh



• 88233  
**EN - Highland Calf-Standing**  
NL - Schots Hooglanderkalf - Rechtopstaand  
FR - Veau Highland - Debout  
IT - Vitello Dell'Altopiano - in Piedi  
ES - Ternero de las Highlands - de Pie  
PT - Novilho Highland - Em Pé  
DE - Schottisches Hochlandkalb - Stehend



• 88243  
**EN - Highland Calf-Lying Down**  
NL - Schots Hooglanderkalf - Liggend Veau  
FR - Highland - Couché  
IT - Vitello Dell'Altopiano - Sdraiato  
ES - Ternero Hereford - Tumbado  
PT - Novilho Highland - Deitado  
DE - Schottisches Hochlandkalb - Liegend

# WILD LIFE





**New**  
*Rare 2011*

• 88460

**EN - Ostrich Chick-Sitting**  
**NL - Struisvogelkiken Zittend**  
**FR - Poussin d'autruche Assis**  
**IT - Cucciolo di Struzzo - Seduto**  
**ES - Cría de Avestruz - Sentada**  
**PT - Avestruz - Cria Sentada**  
**DE - Straußenküken-sitzend**



**New**  
*Rare 2011*

• 88459

**EN - Ostrich**  
**NL - Struisvogel**  
**FR - Autruche**  
**IT - Struzzo**  
**ES - Avestruz**  
**PT - Avestruz**  
**DE - Strauß**



**New**  
*Rare 2011*

• 88461

**EN - Ostrich Chick-Walking**  
**NL - Struisvogelkiken Lopend**  
**FR - Poussin d'autruche Marchant**  
**IT - Cucciolo di Struzzo - Che Cammina**  
**ES - Cría de Avestruz - Caminando**  
**PT - Avestruz - Cria A Andar**  
**DE - Straußenküken-Gehend**



• 88398

**EN - African Buffalo**  
**NL - Afrikaanse Buffel**  
**FR - Buffle d'Afrique**  
**IT - Bufalo africano**  
**ES - Búfalo Africano**  
**PT - Búfalo Africano**  
**DE - Afrikanischer Büffel**

• 88414

**EN - African Lion**  
NL - Afrikaanse Leeuw  
FR - Lion Africain  
IT - Leone Africano  
ES - León Africano  
PT - Leão Africano  
DE - Afrikanischer Löwe



• 88415

**EN - Lioness**  
NL - Leeuwin  
FR - Lionne  
IT - Leonessa  
ES - Leona  
PT - Leoa  
DE - Löwin



• 88416

**EN - Lion Cub-Stretching**  
NL - Leeuwenwelp - Stretching  
FR - Lionceau - Stretching  
IT - Leoncino Che Si Stiraccia  
ES - León Joven - Estirándose  
PT - Leão Jovem - Alongando  
DE - Löwenjunges - Sich Streckend



• 88417

**EN - Lion Cub-Walking**  
NL - Leeuwenwelp - Wandelend  
FR - Lionceau - Se Promenant  
IT - Leoncino In Movimento  
ES - León Joven - Andando  
PT - Leão Jovem - Andando  
DE - Löwenjunges - Gehend



pg 091



New

April  
2011

• 88493

**EN - Chimpanzee Female**  
NL - Chimpanseewijffe  
FR - Chimpanzé Femelle  
IT - Scimpanzé (Femmina)  
ES - Chimpancé Macho  
PT - Chimpanzé Femea  
DE - Schimpanse-weiblich



New

April  
2011

• 88494

**EN - Chimpanzee Cub-Hugging**  
NL - Chimpanseejong Knuffelend  
FR - Chimpanzé Bébé Câlinant  
IT - Cucciolo di Scimpanzé - Che si Abbraccia  
ES - Cachorro de Chimpancé - Abrazando  
PT - Chimpanzé cria a abraçar  
DE - Schimpansenjunges-Klammernd



• 88404

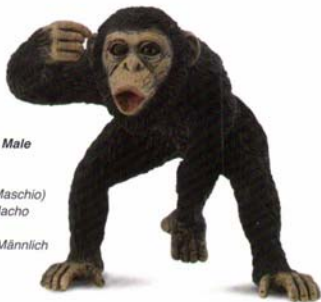
**EN - Western African Giraffe-Drinking**  
NL - Giraf - Etend  
FR - Girafe - Mangeant  
IT - Giraffa dell'Africa Occidentale Mentre Beve  
ES - Girafa de África Occidental - Bebiendo  
PT - Girafa da África Occidental - Comendo  
DE - Westafrikanische Giraffe - fressend

New

April  
2011

• 88492

**EN - Chimpanzee Male**  
NL - Chimpansee  
FR - Chimpanzé  
IT - Scimpanzè (Maschio)  
ES - Chimpancé Macho  
PT - Chimpanzé  
DE - Schimpanse-Männlich



New

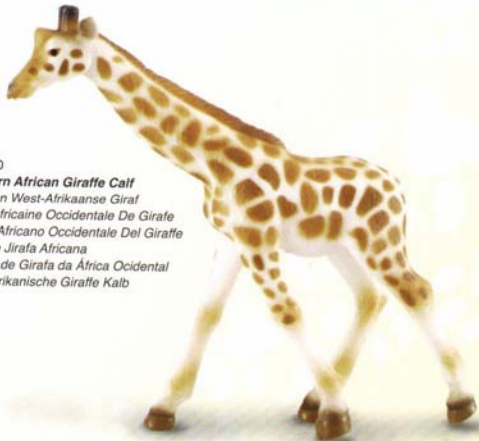
April  
2011

• 88495

**EN - Chimpanzee Cub-Thinking**  
NL - Chimpanseejong Twijfelend  
FR - Chimpanzé Bébé Pensant  
IT - Cucciolo di Scimpanzè - Che Pensa  
ES - Cachorro de Chimpancé - Pensando  
PT - Chimpanzé Cria Pensativo  
DE - Schimpansenjunges-Nachdenkend

• 88130

**EN - Western African Giraffe Calf**  
NL - Kalf Van West-Afrikaanse Giraf  
FR - Veau Africaine Occidentale De Girafe  
IT - Vitello Africano Occidentale Del Giraffe  
ES - Cria de Jirafa Africana  
PT - Filhote de Girafa da África Ocidental  
DE - Westafrikanische Giraffe Kalb



pg 093



**New**

*April*  
2011

• 88486

**EN - Asian Elephant**

NL - Aziatische Olifant

FR - Éléphant d'Asie

IT - Elefante Asiatico

ES - Elefante Asiático

PT - Elefante asiático

DE - Asiatischer Elefant

**New**

*April*  
2011

• 88487

**EN - Asian Elephant Calf**

NL - Aziatisch Olifantenkalf

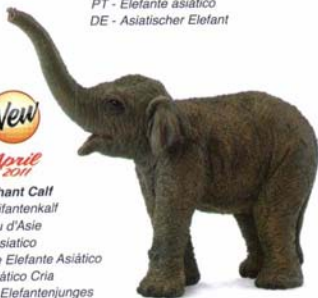
FR - Éléphanton d'Asie

IT - Elefantino Asiatico

ES - Cachorro de Elefante Asiático

PT - Elefante Asiático Cria

DE - Asiatisches Elefantenjunges



• 88301

**EN - Llama**

NL - Lama

FR - Lama

IT - Lama Giama

ES - Llama

PT - Lhama

DE - Lama



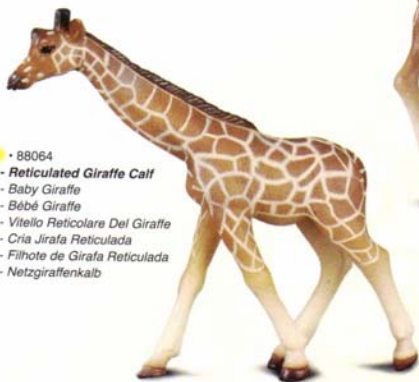
• 88210

**EN - Orangutan**  
NL - Orang-Oetan  
FR - Orang-Outan  
IT - Orangutan  
ES - Orangutan  
PT - Orangotango  
DE - Orang-Utan



• 88046

**EN - Reticulated Giraffe**  
NL - Giraffe  
FR - Giraffe  
IT - Giraffe Reticolare  
ES - Jirafa Reticulada  
PT - Girafa Reticulada  
DE - Netzgiraffe



• 88064

**EN - Reticulated Giraffe Calf**  
NL - Baby Giraffe  
FR - Bébé Giraffe  
IT - Vitello Reticolare Del Giraffe  
ES - Cria Jirafa Reticulada  
PT - Filhote de Girafa Reticulada  
DE - Netzgiraffenkalb

pg 095



**New**

*June  
2011*

• 88498

**EN - Snow Leopard Cub-Running**

NL - Sneeuwpanterwelp Lopend

FR - Bébé Once Courant

IT - Cucciolo di Leopardo Bianco - Che Corre

ES - Cachorro de Leopardo de Las Nieves - Corriendo

PT - Leopardo das Neves Cria a Correr

DE - Schneeleopardenjunge-Rennend

• 88230

**EN - King Cobra**

NL - Cobra

FR - Cobra

IT - Re Cobra

ES - Cobra

PT - Cobra Rei

DE - Königskobra



• 88213

**EN - Nile Crocodile**

NL - Krokodil

FR - Crocodile

IT - Coccodrillo Del Nilo

ES - Coccodrilo del Nilo

PT - Crocodilo do Nilo

DE - Nilkrokodil



New

June  
2011

• 88496

EN - Snow Leopard

NL - Sneeuwpanter

FR - Once

IT - Leopardo Bianco

ES - Leopardo de las Nieves

PT - Leopardo das neves

DE - Schneeleopard



New

June  
2011

• 88497

EN - Snow Leopard Cub-Playing

NL - Sneeuwpanterweip Spelend

FR - Bébè Once Jouant

IT - Cucciolo di Leopardo Bianco - Che Gioca

ES - Cachorro de Leopardo de Las Nieves - Jugando

PT - Leopardo das Neves Cria a Brincar

DE - Schneeleopardenjungs-Spielend



• 88206

EN - Leopard

NL - Luipaard

FR - Léopard

IT - Leopardo

ES - Leopardo

PT - Leopardo

DE - Leopard



pg 097

• 88309

**EN - Lion Family - Deluxe**  
NL - Leeuwenfamilie - Deluxe  
FR - Famille de Lion - Deluxe  
IT - Famiglia Leoni - Deluxe  
ES - Familia de Leones - Deluxe  
PT - Família Leão - Versão Luxo  
DE - Löwenfamilie - Deluxe



• 88031

**EN - White Rhinoceros**  
NL - Witte Neushoorn  
FR - Rhinoceros Blanc  
IT - Rinoceronte  
ES - Rinoceronte Blanco  
PT - Rinoceronte Branco  
DE - Weisses Nashorn

• 88089

**EN - White Rhinoceros Calf**  
NL - Witte Neushoornkalf  
FR - Bébé Rhinoceros Blanc  
IT - Vitello Bianco Del Rhinoceros  
ES - Cria de Rinoceronte Blanco  
PT - Filhote de Rinoceronte Branco  
DE - Weisses Nashorn Kalb





• 88410  
**EN - Tiger**  
NL - Tijger  
FR - Tigre  
IT - Tigre  
ES - Tigre  
PT - Tigre  
DE - Tiger



• 88412  
**EN - Tiger Cub-Lying**  
NL - Tijgerwelp - Liggend  
FR - Bébé Tigre - Couché  
IT - Tigrotto Seduto  
ES - Tigre Joven - Acostado  
PT - Tigre Jovem - Deitado  
DE - Tigerjunges (Liegend)



• 88413  
**EN - Tiger Cub-Walking**  
NL - Tijgerwelp - Wandelend  
FR - Bébé Tigre - Se Promenant  
IT - Tigrotto in Movimento  
ES - Tigre Joven - Andando  
PT - Tigre Jovem - Andando  
DE - Tigerjunges - Gehend

• 88205  
**EN - Black Panther**  
NL - Zwarte Panter  
FR - Panthère Noire  
IT - Pantera Nera  
ES - Pantera Negra  
PT - Pantera Negra  
DE - Schwarzer Panther



pg 099



• 88029

**EN - Hippopotamus**  
NL - Nijlpaard  
FR - Hippopotame  
IT - Ippopotamo  
ES - Hipopótamo  
PT - Hipopótamo  
DE - Flusspferd

• 88090

**EN - Hippopotamus Calf**  
NL - Nijlpaardkalf  
FR - Bébé Hippopotame  
IT - Vitello Del Ippopotamo  
ES - Cria de Hipopótamo  
PT - Filhote de Hipopótamo  
DE - Flusspferdkalb



• 88336

**EN - American Bison**  
NL - Amerikaanse Bizon  
FR - Bison d'Amérique  
IT - Bisonte Americano  
ES - Bisonte Americano  
PT - Bisão Africano  
DE - Amerikanischer Bison



• 88168

**EN - Zebra Foal**  
NL - Zebra Veulen  
FR - Poulain de Zèbre  
IT - Foal Della Zebra  
ES - Potro de Cebra  
PT - Potro de Zebra  
DE - Zebrafohlen

• 88025  
**EN - African Elephant**  
**NL - Afrikaanse Olifant**  
**FR - Eléphant d'Afrique**  
**IT - Elefante Africano**  
**ES - Elefante Africano**  
**PT - Elefante Africano**  
**DE - Afrikanischer Elefant**



• 88026  
**EN - African Elephant Calf**  
**NL - Afrikaanse Baby Olifant**  
**FR - Eléphant d'Afrique Bébé**  
**IT - Vitello Del Elefante Africano**  
**ES - Cria de Elefante Africano**  
**PT - Filhote de Elefante Africano**  
**DE - Afrikanischer Elefant Kalb**

• 88032  
**EN - Common Zebra**  
**NL - Zebra**  
**FR - Zèbre**  
**IT - Zebra Comune**  
**ES - Cebra**  
**PT - Zebra Comum**  
**DE - Steppenzebra**



pg 101

• 88356

**EN - Koala-Climbing**

NL - Koala - Klimmend

FR - Koala - Montant

IT - Koala - Che Si Arrampica

ES - Koala - Trepando

PT - Coala - Escalando

DE - Koala - kletternd



• 88357

**EN - Koala-Eating Eucalyptus**

NL - Koala - Met Eucalyptus

FR - Koala - Avec Eucalyptus

IT - Koala - Che Mangia Eucalipto

ES - Koala (Comiendo Eucalipto)

PT - Coala (Comendo Eucalipto)

DE - Koala (Eukalyptus fressend)



• 88335

**EN - Moose**

NL - Eland

FR - Élan

IT - Alce

ES - Alce

PT - Alce

DE - Elch



• 88302

**EN - Red Kangaroo**  
NL - Kangoeroe  
FR - Kangourou  
IT - Canguro Rosso  
ES - Canguro Rojo  
PT - Canguro Vermelho  
DE - Rotes Riesenkänguru



pg 103



• 88208

**EN - Dromedary Camel**  
NL - Dromedaris  
FR - Dromadaire  
IT - Cammello Del Dromedary  
ES - Dromedario  
PT - Dromedário  
DE - Dromedar

● 88426  
**EN - White Tiger**  
NL - Witte Tijger  
FR - Tigre Blanc  
IT - Tigre Bianca  
ES - Tigre Blanco  
PT - Tigre Branco  
DE - Weisser Tiger



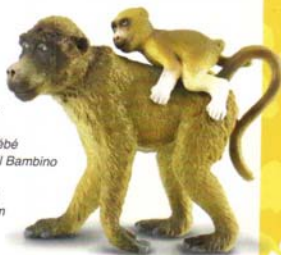
● 88429  
**EN - White Tiger Cub-Walking**  
NL - Witte Tijgerwelp - Wandelend  
FR - Bébé Tigre blanc - Se Promenant  
IT - Tigrotto Bianco - In Movimento  
ES - Tigre Blanco Joven - Andando  
PT - Tigre Branco Jovem - Andando  
DE - Weisser Tiger Junges - Gehend



● 88428  
**EN - White Tiger Cub-Lying**  
NL - Witte Tijgerwelp - Liggend  
FR - Bébé Tigre blanc - Couché  
IT - Tigrotto bianco - Seduto  
ES - Tigre Blanco Joven - Acostado  
PT - Tigre Branco Jovem - Deitado  
DE - Weisser Tiger Junges - Liegend



• 88204  
**EN - Baboon Male**  
NL - Baviaan  
FR - Babouin  
IT - Maschio del Babuino  
ES - Babuino Macho  
PT - Babuino Macho  
DE - Pavian Männchen



• 88203  
**EN - Baboon Female with Baby**  
NL - Baviaanwijfe Met Baby  
FR - Femelle De Babouin Avec Bébé  
IT - Femmina del Babuino con il Bambino  
ES - Babuino Hembra con Cria  
PT - Babuino Fêmea com Filhote  
DE - Pavian Weibchen mit Jungem



• 88088  
**EN - Western Gorilla Baby**  
NL - Baby Gorilla  
FR - Bébé Gorille  
IT - Bambino Occidentale Del Gorilla  
ES - Cria de Gorila  
PT - Filhote de Gorila da África Ocidental  
DE - Westlicher Gorilla Junges

• 88033  
**EN - Western Gorilla**  
NL - Gorilla  
FR - Gorille  
IT - Gorilla Occidentale  
ES - Gorila  
PT - Gorila da África Ocidental  
DE - Westlicher Gorilla



pg 105



• 88383

**EN - American Bald Eagle**

NL - Amerikaanse Witkopzeearend

FR - Aigle à Tête Blanche

IT - Aquila Calva Americana

ES - Águila Americana

PT - Águia Americana

DE - Amerikanischer Weisskopfseeadler



• 88207

**EN - Flamingo**

NL - Flamingo

FR - Flamant

IT - Flamingo

ES - Flamenco

PT - Flamingo

DE - Flamingo



• 88217

**EN - Meerkat-Standing**

NL - Meerkat - Rechtopstaand

FR - Mangouste - Debout

IT - Meer Kat - Levarsi in Piedi

ES - Suricato - de Pie

PT - Suricato - Em Pé

DE - Erdmännchen - Stehend



• 88218

**EN - Meerkat-Walking**

NL - Meerkat - Lopend

FR - Mangouste - Marchante

IT - Meer Kat - Camminando

ES - Suricato - Caminando

PT - Suricato - Andando

DE - Erdmännchen - Gehend



● 88399

**EN - Peregrine Falcon**

NL - Slechtvalk

FR - Faucon Pèlerin

IT - Falco Pellegrino

ES - Halcón Peregrino

PT - Falcão Peregrino

DE - Wanderfalke



● 88396

**EN - Black-Faced Spoonbill-Standing**

NL - Kleine Lepelaar - Rechstaand

FR - Petite Spatule - Debout

IT - Spatola dal becco nero - Ferma

ES - Espátula de Cara Negra - En Pie

PT - Colhereiro de Cara Preta - De Pé

DE - Schwarzgesichtlöffler - Stehend

● 88397

**EN - Black-Faced Spoonbill-Walking**

NL - Kleine Lepelaar - Wandelend

FR - Petite Spatule - Se Promenant

IT - Spatola dal becco nero - In Movimento

ES - Espátula de Cara Negra - Andando

PT - Colhereiro de Cara Preta - Andando

DE - Schwarzgesichtlöffler - gehend



pg 107



• 88167

**EN - Giant Panda Cub-Standing**

NL - Pandawelp - Rechtopstaand

FR - Petit Panda - Debout

IT - Condizione Gigante del Cub del Panda

ES - Cachorro Panda de Gigante - de Pie

PT - Panda Gigante Jovem - Em Pé

DE - Pandabärjunges - Stehend



• 88166

**EN - Giant Panda**

NL - Reuze Panda

FR - Panda Géant

IT - Panda Gigante

ES - Panda Gigante

PT - Panda Gigante

DE - Pandabär



• 88219

**EN - Giant Panda Cub-Sitting**

NL - Pandawelp - Zittend

FR - Petit Panda - Assis

IT - Seduta Gigante Del Cub Del Panda

ES - Cachorro de Oso Panda - Sentado

PT - Panda Gigante Jovem - Sentado

DE - Pandabärjunges - Sitzend



• 88024

**EN - Grizzly Bear Cub**

NL - Grizzly Beertje

FR - Ourson Grizzly

IT - Cub di Orso di Grizzly

ES - Cachorro de Oso Pardo

PT - Urso Pardo Jovem

DE - Grizzlybärjunges

• 88216

**EN - Polar Bear Cub-Sitting**

NL - Ijsbeerwelp - Zittend

FR - Ourson Blanc - Assis

IT - Cub dell'Orso Polare - Sedendosi

ES - Cachorro Oso Polar - Sentado

PT - Urso Polar Jovem - Sentado

DE - Eisbärenjunges - sitzend



• 88214

**EN - Polar Bear**

NL - Ijsbeer

FR - Ours Blanc

IT - Orso Polare

ES - Oso Polar

PT - Urso Polar

DE - Eisbär



• 88215

**EN - Polar Bear Cub-Standing**

NL - Ijsbeerwelp - Rechtopstaand

FR - Ourson Blanc - Debout

IT - Cub dell'Orso Polare - Levandosi in Piedi

ES - Cachorro de Oso Polar - de Pie

PT - Urso Polar Jovem - Em Pé

DE - Eisbärenjunges - Stehend



• 88030

**EN - Grizzly Bear**

NL - Grizzly Bear

FR - Ours Grizzly

IT - Orso di Grizzly

ES - Oso Pardo

PT - Urso Pardo

DE - Grizzlybär

pg 109



• 89329

**EN - 10" Ginkgo Biloba Tree - Deluxe**

**NL - 10" Ginkgo Biloba - Deluxe**

**FR - 10" Ginkgo Biloba - Deluxe**

**IT - 10" Ginkgo Biloba - Deluxe**

**ES - 10" El Ginkgo - Deluxe**

**PT - Árvore de Ginkgo Biloba com 25,4 cm- Versão Luxo**

**DE - Ginkgobaum (25 cm hoch).- Deluxe**

# WOODLANDS



• 88003  
**EN - Barn Owl**  
NL - Uil  
FR - Hibou  
IT - Gufo di Granaio  
ES - Lechuza  
PT - Coruja  
DE - Schleiereule



• 88467  
**EN - Red Squirrel-Eating**  
NL - Rode Eekhoorn Etend  
FR - Écureuil roux mangeant  
IT - Sciottolo Rosso - Che Mangia  
ES - Ardilla Roja Comiendo  
PT - Esquilo vermelho a Comer  
DE - Eichhörnchen



**New**  
Jan  
2011

• 88015  
**EN - Eurasian Badger**  
NL - Europees-Aziatische Das  
FR - Blaireau d'Eurasie  
IT - Tasso Eurasian  
ES - Tejón Europeo  
PT - Texugo  
DE - Europäischer Dachs



• 88458  
**EN - Hedgehog**  
NL - Egel  
FR - Hérisson  
IT - Porcospina  
ES - Erizo  
PT - Ouriço  
DE - Igel



**New**  
Jan  
2011

• 88001  
**EN - Red Fox**  
NL - Rode Vos  
FR - Renard Roux  
IT - Volpe Rossa  
ES - Zorro  
PT - Raposa Vermelha  
DE - Rotfuchs



• 88382  
**EN - Beaver**  
NL - Bever  
FR - Castor  
IT - Castoro  
ES - Castor  
PT - Castor  
DE - Biber



• 88341  
**EN - Timber Wolf-Howling**  
NL - Wolf - Huiltend  
FR - Loup - Hurlant  
IT - Lupo - Che Ulula  
ES - Lobo - Aullando  
PT - Lobo inzento Americano - Uivando  
DE - Timberwolf - heulend



• 88342  
**EN - Timber Wolf-Hunting**  
NL - Wolf - op Jacht  
FR - Loup - Chassant  
IT - Lupo - Che Caccia  
ES - Lobo - Cazando  
PT - Lobo inzento Americano Caçando  
DE - Timberwolf - jagend



• 88381  
**EN - Skunk**  
NL - Stinkdier  
FR - Mufette  
IT - Moffetta  
ES - Zorrillo  
PT - Gambá  
DE - Stinktief



• 88002  
**EN - Rabbit**  
NL - Konijn  
FR - Lapin  
IT - Coniglio  
ES - Conejo  
PT - Coelho  
DE - Kaninchen



• 88012  
**EN - Brown Hare**  
NL - Bruine Haas  
FR - Lièvre Brun  
IT - Lepri Marroni  
ES - Liebre  
PT - Lebre Marrom  
DE - Europäischer Feldhase



• 88053  
**EN - Common Otter**  
NL - Otter  
FR - Loutre  
IT - Lontra Comune  
ES - Nutria  
PT - Lontra Comum  
DE - Fischotter



New

Jan  
2011

• 88469

EN - Red Deer Stag  
NL - Hertenbok rood  
FR - Chevreuil Rouge  
IT - Cervo Rosso  
ES - Ciervo  
PT - Veado Vermelho  
DE - Hirsch



New

Jan  
2011

• 88470

EN - Red Deer Hind  
NL - Hinde Rood  
FR - Biche Rouge  
IT - Cerva Rossa  
ES - Cierva  
PT - Corça Vermelha  
DE - Reh



New

Jan  
2011

• 88471

EN - Red Deer Calf  
NL - Hertenkalf Rood  
FR - Faon Rouge  
IT - Cerbiatto Rosso  
ES - Cervatillo  
PT - veado vermelho cria  
DE - Rehkitz

pg 115

• 88362

**EN - Dartmoor Pony-Chestnut**  
**NL - Dartmoor Pony - Kastanjebruin**  
**FR - Dartmoor Poney - Châtaigne**  
**IT - Pony di Dartmoor - Castagna**  
**ES - Pony de Dartmoor - Castaña**  
**PT - Pônei Dartmoor - Castanho**  
**DE - Dartmoor-Pony Fuchs**



• 88241

**EN - Dartmoor Pony-Dark Bay**  
**NL - Dartmoor Pony - Donker Voskleurig**  
**FR - Dartmoor Poney - Foncé Bai**  
**IT - Pony di Dartmoor - Scuro Baia**  
**ES - Pony de Dartmoor - Castaño Oscuro**  
**PT - Pônei Dartmoor - Baio Escuro**  
**DE - Dartmoor-Pony dunkelbraun**

• 88363  
**EN - Wild Boar**  
NL - Everzwijn  
FR - Sanglier  
IT - Cinghiale - Maschio  
ES - Jabali  
PT - Javali  
DE - Wildschwein - Eber



• 88365  
**EN - Wild Piglet-Walking**  
NL - Wild Big - Wandelend  
FR - Cochonnet Sauvage - Se Promenant  
IT - Cinghialotto in Movimento  
ES - Cachorro de Jabali - Caminando  
PT - Filhote de Javali - Caminhando  
DE - Wildschwein Frischling - Gehend



• 88364  
**EN - Wild Sow**  
NL - Wilde Zeug  
FR - Truie  
IT - Cinghiale - Femmina  
ES - Jabalina  
PT - Javali Fêmea  
DE - Wildschwein - Bache

• 88366  
**EN - Wild Piglet-Eating**  
NL - Wild Big - Etend  
FR - Cochonnet Sauvage - Mangeant  
IT - Cinghialotto Mentre Mangia  
ES - Cachorro de Jabali - Comiendo  
PT - Filhote de Javali - Comendo  
DE - Wildschwein Frischling - Fressend



# INSECTS





New

April  
2011

● - 88474

EN - Ladybird

NL - Lieveheersbeestje

FR - Coccinelle

IT - Coccinella

ES - Mariquita

PT - Joanhinha

DE - Marienkäfer



New

April  
2011

● - 88499

EN - Bumble Bee

NL - Hommel

FR - Bourdon

IT - Bombo

ES - Abejorro

PT - Abelhão

DE - Hummel



• 88338

**EN - Mexican Redknee Tarantula**

**NL - Mexicaanse Roodknievogelspin**

**FR - Mygale**

**IT - Tarantola Zampe Rosse**

**ES - Tarantula Mejicana Redknee**

**PT - Caranguejeira de Joelho Vermelho Mexicana**

**DE - Mexikanische Rotknie-Vogelspinne**



• 88351

**EN - Praying Mantis**

**NL - Bidsprinkhaan**

**FR - Mante**

**IT - Mantide Religiosa**

**ES - Mantis Religiosa**

**PT - Louva-a-Deus**

**DE - Gottesanbeterin**



● 88350

**EN - Golden-Ringed Dragonfly**

NL - Libel

FR - Libellule

IT - Libellula

ES - Libelula con Anillos Dorados

PT - Libélua Tigre

DE - Zweigestreifte Quelljungfer



● 88349

**EN - Yellow Fat-Tailed Scorpion**

NL - Schorpioen

FR - Scorpion

IT - Scorpione Giallo

ES - Escorpión de Cola Grasa

PT - Escorpião Amarelo de Cauda Grossa

DE - Gelber Sahara Dickschwanzskorpion

● 88386

**EN - Red-Eyed Tree Frog**

NL - Roodoogboomkikker

FR - Rainette Verte aux yeux Rouges

IT - Rana dagli Occhi Rossi

ES - Rana Arborescente de Ojos Rojos

PT - Rã Arbóricola de Olhos Vermelhos

DE - Rotaugenlaubfrosch





• 88337

**EN - Rhinoceros Beetle**  
NL - Neushoornkever  
FR - Scarabée Nasicorne  
IT - Scarabeo Rinoceronte  
ES - Escarabajo Rinoceronte  
PT - Escaravelho Rinoceronte  
DE - Riesenkäfer

• 88352

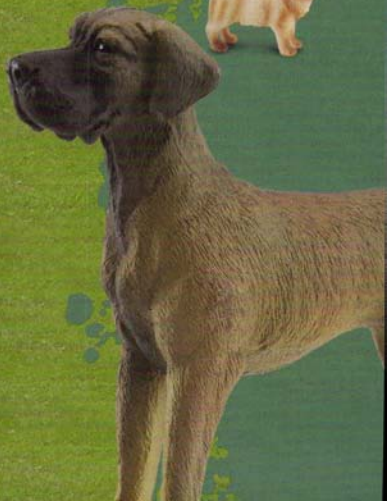
**EN - Grasshopper**  
NL - Sprinkhaan  
FR - Sauterelle  
IT - Grillo  
ES - Saltamontes  
PT - Gafanhoto  
DE - Heuschrecke



• 88387

**EN - Small Tortoiseshell**  
NL - Kleine Vosvlinder  
FR - Petite Tortue  
IT - Farfallina Ninfalide  
ES - Ortiguera  
PT - Pequena borboleta tartaruga  
DE - Kleiner Fuchs

# CATS & DOGS



New

June  
2011



• 88506

EN - St Bernard  
NL - Sint-Bernard  
FR - Saint-bernard  
IT - San Bernardo  
ES - San Bernardo  
PT - S. Bernardo  
DE - Bernhardiner



• 88180

EN - Bull Dog Puppy  
NL - Puppy Bulldog  
FR - Chiot de Bouledogue  
IT - Puppy del Cane dal Bull  
ES - Cachorro de Bulldog  
PT - Filhote de Bulldog  
DE - Englische Bulldogge Welpe



• 88179

EN - Bull Dog  
NL - Bulldog  
FR - Bouledogue  
IT - Cane dal Bull  
ES - Bulldog  
PT - Bulldog  
DE - Englische Bulldogge



• 88072

EN - Dalmatian  
NL - Dalmatiër  
FR - Dalmatien  
IT - Dalmatiër  
ES - Dálmata  
PT - Dálmata  
DE - Dalmatiner



• 88073

EN - Dalmatian Puppy  
NL - Dalmatiërwelp  
FR - Chiot Dalmatien  
IT - Dalmatiërwelp  
ES - Cachorro de Dálmata  
PT - Filhote de Dálmata  
DE - Dalmatiner Welpe



• 88082  
**EN - Welsh Corgi**  
NL - Welsh Corgi  
FR - Welsh Corgi  
IT - Welsh Corgi  
ES - Corgi Galés  
PT - Welsh Corgi  
DE - Walisischer Zwerghund



• 88195  
**EN - Shih Tzu**  
NL - Shih Tzu  
FR - Shih Tzu  
IT - Shih Tzu  
ES - Shih Tzu  
PT - Shih Tzu  
DE - Shih Tzu



• 88384  
**EN - Bull Terrier-Male**  
NL - Bull Terrier - Mannelijk  
FR - Bull Terrier - Mâle  
IT - Bull Terrier - Maschio  
ES - Bull Terrier - Macho  
PT - Bull Terrier - Macho  
DE - Bullterrier - Männchen



• 88385  
**EN - Bull Terrier-Female**  
NL - Bull Terrier - vrouwelijk  
FR - Bull Terrier - Femelle  
IT - Bull Terrier - Femmina  
ES - Bull Terrier - Hembra  
PT - Bull Terrier - Fêmea  
DE - Bullterrier - Weibchen



• 88076  
**EN - Labrador Retriever**  
NL - Labrador Retriever  
FR - Labrador Retriever  
IT - Labrador Retriever  
ES - Labrador Retriever  
PT - Labrador Retriever  
DE - Labrador Retriever

• 88077  
**EN - Labrador Retriever Puppy**  
NL - Labrador Retriever Puppy  
FR - Chiot Labrador Retriever  
IT - Labrador Retriever Puppy  
ES - Cachorro de Labrador Retriever  
PT - Filhote de Labrador Retriever  
DE - Labrador Retriever Welpe





● • 88062  
**EN - Great Dane**  
NL - Deense Dog  
FR - Dogue Allemand  
IT - Deense Dog  
ES - Gran Danés  
PT - Braco Dinamarquês  
DE - Deutsche Dogge



● • 88065  
**EN - Great Dane Puppy**  
NL - Deense Dog Puppy  
FR - Chiot Doque Allemand  
IT - Deense Dog Puppy  
ES - Cachorro Gran Danés  
PT - Filhote de Cão Dinamarquês  
DE - Deutsche Dogge Welpe



● • 88176  
**EN - Airedale Terrier Puppy**  
NL - Puppy Airedale Terriër  
FR - Chiot d'Airedale Terrier  
IT - Puppy di Airedale Terrier  
ES - Cachorro de Terrier de Airedale  
PT - Filhote de Airedale Terrier  
DE - Airedale Terrier Welpe



● • 88175  
**EN - Airedale Terrier**  
NL - Airedale Terriër  
FR - Airedale Terrier  
IT - Airedale Terrier  
ES - Terrier de Airedale  
PT - Airedale Terrier  
DE - Airedale Terrier



● • 88190  
**EN - Rottweiler Puppy**  
NL - Puppy Rottweiler  
FR - Chiot de Rottweiler  
IT - Rottweiler Puppy  
ES - Cachorro de Rottweiler  
PT - Filhote de Rottweiler  
DE - Rottweiler Welpe



● • 88189  
**EN - Rottweiler**  
NL - Rottweiler  
FR - Rottweiler  
IT - Rottweiler  
ES - Rottweiler  
PT - Rottweiler  
DE - Rottweiler



• 88066  
**EN - Old English Sheepdog**  
**NL - Oude Engelse Herdershond**  
**FR - Bobtail**  
**IT - Oude Engelse Herdershond**  
**ES - Viejo Pastor Inglés (Bobtail)**  
**PT - Old English Sheepdog**  
**DE - Bobtail**



• 88067  
**EN - Old English Sheepdog Puppy**  
**NL - Oude Engelse Herdershond Puppy**  
**FR - Chiot Bobtail**  
**IT - Oude Engelse Herdershond Puppy**  
**ES - Cachorro de Viejo Pastor Inglés**  
**PT - Filhote de Old English Sheepdog**  
**DE - Bobtail Welpe**



• 88177  
**EN - Beagle**  
**NL - Beagle**  
**FR - Beagle**  
**IT - Cane da Lepre**  
**ES - Beagle**  
**PT - Beagle**  
**DE - Beagle**



• 88080  
**EN - Jack Russell Terrier**  
**NL - Jack Russel Terrier**  
**FR - Jack Russel Terrier**  
**IT - Jack Russel Terrier**  
**ES - Jack Russell Terrier**  
**PT - Jack Russell Terrier**  
**DE - Jack Russell Terrier**



• 88185  
**EN - Dachshund**  
**NL - Teckel**  
**FR - Teckel**  
**IT - Dachshund**  
**ES - Dachshund (Perro Salchicha)**  
**PT - Dachshund**  
**DE - Dackel**



● • 88087

**EN - Doberman Pinscher Puppy**

NL - Dobermann Pinscher Puppy  
FR - Chiot Dobermann Pinscher  
IT - Dobermann Pinscher Puppy  
ES - Cachorro de Dobermann  
PT - Filhote de Doberman Pinscher  
DE - Dobermann Welpe



● • 88086

**EN - Doberman Pinscher**

NL - Dobermann Pinscher  
FR - Dobermann Pinscher  
IT - Dobermann Pinscher  
ES - Dobermann  
PT - Doberman Pinscher  
DE - Dobermann



● • 88068

**EN - Irish Red Setter**

NL - Ierse Rode Setter  
FR - Setter Irlandais Rouge  
IT - Ierse Rode Setter  
ES - Setter Irlandés Rojo  
PT - Setter Irlandés Vermelho  
DE - Irish Red Setter



● • 88069

**EN - Irish Red Setter Puppy**

NL - Ierse Rode Setter Puppy  
FR - Chiot Setter Irlandais Rouge  
IT - Ierse Rode Setter Puppy  
ES - Cachorro de Setter Irlandés Rojo  
PT - Filhote de Setter Irlandés Vermelho  
DE - Irish Red Setter Welpe



● • 88194

**EN - Shar Pei Puppy**

NL - Puppy Shar Pei  
FR - Chiot de Shar Pei  
IT - Puppy di Shar Pei  
ES - Cachorro de Shar Pei  
PT - Filhote de Shar Pei  
DE - Shar-Pei Welpe

● • 88193

**EN - Shar Pei**

NL - Shar-Pei  
FR - Shar Pei  
IT - Shar Pei  
ES - Shar Pei  
PT - Shar Pei  
DE - Shar-Pei





• 88084

**EN - German Shepherd**  
NL - German Shepherd  
FR - German Shepperd  
IT - German Shepherd  
ES - Pastor Alemán  
PT - Pastor Alemão  
DE - Deutscher Schäferhund



• 88085

**EN - German Shepherd Puppy**  
NL - German Shepherd Puppy  
FR - Chiot German Shepperd  
IT - German Shepherd Puppy  
ES - Cachorro de Pastor Alemán  
PT - Filhote de Pastor Alemão  
DE - Deutscher Schäferhund Welpe



• 88117

**EN - Golden Retriever Puppy**  
NL - Puppy Golden Retriever  
FR - Chiot de Golden Retriever  
IT - Puppy Dorato del Documentalista  
ES - Cachorro de Golden Retriever  
PT - Filhote de Golden Retriever  
DE - Golden Retriever Welpe

• 88116

**EN - Golden Retriever**  
NL - Golden Retriever  
FR - Golden Retriever  
IT - Documentalista Dorato  
ES - Golden Retriever  
PT - Golden Retriever  
DE - Golden Retriever

pg 129



• 88187

**EN - Greyhound**  
NL - Greyhound  
FR - Lévrier Greyhound  
IT - Greyhound  
ES - Galgo Inglés  
PT - Greyhound  
DE - Windhund



• 88188

**EN - Greyhound Puppy**  
NL - Puppy Greyhound  
FR - Chiot de Lévrier Greyhound  
IT - Greyhound Puppy  
ES - Cachorro de Galgo Inglés  
PT - Filhote de Greyhound  
DE - Windhund Welpe



• 88183  
**EN - Chow Chow**  
 NL - Chow Chow  
 FR - Chow-chow  
 IT - Chow del Chow  
 ES - Chow Chow  
 PT - Chow Chow  
 DE - Chow-Chow



• 88184  
**EN - Chow Chow Puppy**  
 NL - Puppy Chow Chow  
 FR - Chiot de Chow-Chow  
 IT - Puppy del Chow del Chow  
 ES - Cachorro de Chow Chow  
 PT - Filhote de Chow Chow  
 DE - Chow-Chow Welpe



• 88074  
**EN - West Highland White**  
 NL - Witte Terrier West Highland  
 FR - Terrier Blanc West Highland  
 IT - Witte Terrier West Highland  
 ES - Terrier West Highland Blanco  
 PT - West Highland Branco  
 DE - West Highland White Terrier



• 88070  
**EN - English Cocker Spaniel**  
 NL - Engelse Cockerspaniel  
 FR - Cocker Anglais  
 IT - Engelse Cockerspaniel  
 ES - Cocker Spaniel Inglés  
 PT - Cocker Spaniel Inglês  
 DE - English Cocker Spaniel



• 88174  
**EN - Afghan Hound Puppy**  
 NL - Puppy Afghaanse Windhund  
 FR - Chiot de Lévrier Afghan  
 IT - Puppy del Hound Afgano  
 ES - Cachorro de Afgano  
 PT - Filhote de Afghan Hound  
 DE - Afghanischer Windhund Welpe



• 88173  
**EN - Afghan Hound**  
 NL - Afghaanse Windhund  
 FR - Lévrier Afghan  
 IT - Hound Afgano  
 ES - Afgano  
 PT - Afghan Hound  
 DE - Afghanischer Windhund

• 88192

**EN - Rough Haired Collie Puppy**

NL - Puppy Herdershond

FR - Chiot de Colley

IT - Puppy Hairèd di Massima del Collie

ES - Cachorro de Collie de Pelo Rojo

PT - Filhote de Collie de Pelo Longo

DE - Langhaar-Collie Welpe



• 88181

**EN - Cavalier King Charles Spaniel**

NL - Cavalier King Charles Spaniel

FR - Cavalier King Charles Spaniel

IT - Re Charles Spaniel Cavalier

ES - Cavalier King Charles Spaniel

PT - Cavalier King Charles Spaniel

DE - Cavalier King Charles Spaniel

• 88191

**EN - Rough Haired Collie**

NL - Herdershond

FR - Colley

IT - Collie Hairèd di Massima

ES - Collie de Pelo Rojo

PT - Collie de Pelo Longo

DE - Langhaar-Collie



• 88078

**EN - Yorkshire Terrier**

NL - Yorkshire Terrier

FR - Yorkshire Terrier

IT - Yorkshire Terrier

ES - Yorkshire Terrier

PT - Yorkshire Terrier

DE - Yorkshire Terrier



pg 131

• 88324

**EN - British Shorthair Cat-Stretching**

NL - Britse Kortharige Kat - Stretching

FR - Gatto Inglese a Pelo Corto - Estirandose

IT - Gatto Inglese a Pelo Corto - Che si Stira

ES - Gato Ingles de Pelo Corto - Estirandose

PT - Gato Inglês de Pelo Curto - Alongando

DE - Britisch Kurzhaar Katze - sich streckend



• 88323

**EN - British Shorthair Cat-Sitting**

NL - Britse Kortharige Kat - Zittend

FR - Gatto Inglese a Pelo Corto - Seduto

IT - Gatto Inglese a Pelo Corto - Seduto

ES - Gato Ingles de Pelo Corto - Sentado

PT - Gato Inglês de Pelo Curto - Sentado

DE - Britisch Kurzhaar Katze - sitzend



• 88491

**EN - 3-Colour House Cat-Stretching**  
NL - Huiskat met 3 Kleuren Stretching  
FR - Chat 3 Couleurs Stretching  
IT - Gattino 3 Colori - Stiracchiato  
ES - Gato Tricolor - Desperezándose  
PT - Gato Tigrado Sentado  
DE - 3-Farbige Hauskatze-Sich Streckend



**New**  
April  
2011

• 88490

**EN - 3-Colour House Cat-Sitting**  
NL - Huiskat met 3 kleuren zittend  
FR - Chat 3 Couleurs Assis  
IT - Gattino 3 Colori - Seduto  
ES - Gato Tricolor - Sentado  
PT - Gato tigrado sentado  
DE - 3-farbige Hauskatze-sitzend

**New**  
April  
2011



• 88332

**EN - Siamese Cat-Stretching**  
NL - Siamese Kat - Stretching  
FR - Chat Siamois - Stretching  
IT - Gatto Siamese - Che si Stira  
ES - Gato Siames - Estirándose  
PT - Gato Siamês - Alongando  
DE - Siamkatze - sich streckend



• 88331

**EN - Siamese Cat-Sitting**  
NL - Siamese Kat - Zittend  
FR - Chat Siamois - Assis  
IT - Gatto Siamese - Seduto  
ES - Gato Siames - Sentado  
PT - Gato Siamês - Sentado  
DE - Siamkatze - Sitzend



• 88330

**EN - Persian Cat-Lying**  
NL - Perzische Kat - Liggend  
FR - Chat Persan - Couché  
IT - Gatto Persiano - Sdraiato  
ES - Gato Persa - Tumbado  
PT - Gato Persa - Deitado  
DE - Perserkatze - liegend



• 88329

**EN - Persian Cat-Sitting**  
NL - Perzische Kat - Zittend  
FR - Chat Persan - Assis  
IT - Gatto Persiano - Seduto  
ES - Gato Persa - Sentado  
PT - Gato Persa - Sentado  
DE - Perserkatze - sitzend





• 88328

**EN - Norwegian Forest Cat-Standing**

NL - Noorse Boskat - Rechtopstaand

FR - Chat Norvégien - Debout

IT - Gatto Norvegese delle Foreste - in Piedi

ES - Gato Noruego - de Pie

PT - Gato dos Bosques da Noruega - Em Pé

DE - Norwegische Waldkatze - stehend



• 88327

**EN - Norwegian Forest Cat-Sitting**

NL - Noorse Boskat - Zittend

FR - Chat Norvégien - Assis

IT - Gatto Norvegese delle Foreste - Seduto

ES - Gato Noruego - Sentado

PT - Gato dos Bosques da Noruega - Sentado

DE - Norwegische Waldkatze - sitzend



• 88322

**EN - Birman Cat-Standing**

NL - Birmaan Kat - Rechtopstaand

FR - Birman Chat - Debout

IT - Gatto Sacro di Birmania - in Piedi

ES - Gato Birmano - de Pie

PT - Gato Sagrado da Birmânia - Em Pé

DE - Birma-Katze - Stehend



• 88321

**EN - Birman Cat-Sitting**

NL - Birmaan Kat - Zittend

FR - Birman Chat - Assis

IT - Gatto Sacro di Birmania - Seduto

ES - Gato Birmano - Sentado

PT - Gato Sagrado da Birmânia - Sentado

DE - Birma-Katze - sitzend



• 88326

**EN - Burmese Cat-Lying**

NL - Burmese Kat - Liggend

FR - Burmese Chat - Couché

IT - Gatto Burmese - Sdraiato

ES - Gato Burmes - Tumbado

PT - Gato Birmanês - Deitado

DE - Burma-Katze - liegend



• 88325

**EN - Burmese Cat-Standing**

NL - Burmese Kat - Rechtopstaand

FR - Burmese Chat - Debout

IT - Gatto Burmese - in Piedi

ES - Gato Burmes - de Pie

PT - Gato Birmanês - Em Pé

DE - Burma-Katze - Stehend

# SEA LIFE





New

Jan  
2011

• 88455

EN - Manatee  
NL - Lamantijn  
FR - Lamantin  
IT - Lamantino  
ES - Manatí  
PT - Manatim  
DE - Seekuh

• 88457

EN - Manatee Calf-Sitting  
NL - Zeekoekalf Zittend  
FR - Bébè lamantin Assis  
IT - Cucciolo di Lamantino - Seduto  
ES - Cria de Manatí - Sentado  
PT - Manatim - Cria Sentada  
DE - Seekuhkalf-Sitzend



New

Jan  
2011

pg 135



• 88456

EN - Manatee Calf-Swimming  
NL - Zeekoekalf Zwemmend  
FR - Bébè lamantin Nageant  
IT - Cucciolo di Lamantino - Che nuota  
ES - Cria de Manatí - Nadando  
PT - Manatim - cria a nadar  
DE - Seekuh-schwimmend

New

Jan  
2011

• 88453

**EN - Whale Shark**  
NL - Walvishaai  
FR - Requin-Baleine  
IT - Squalo Balena  
ES - Tiburón Ballena  
PT - Tubarão Baleia  
DE - Walhai

**New**

June  
2011



• 88043

**EN - Orca**  
NL - Orka  
FR - Epaulard  
IT - Balena di Assassino  
ES - Orca  
PT - Orca  
DE - Killerwal

• 88347

**EN - Humpback Whale**

NL - Bultrug Walvis

FR - Baleine à Bosse

IT - Balena Megattera

ES - Ballena Jorobada

PT - Baleia Jubarte

DE - Buckelwal



pg 137

• 88041

**EN - Great White Shark**

NL - Grote Witte Haai

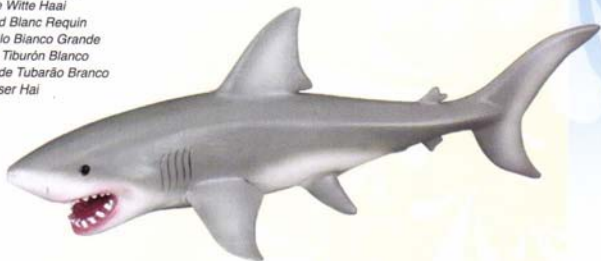
FR - Grand Blanc Requin

IT - Squalo Bianco Grande

ES - Gran Tiburón Blanco

PT - Grande Tubarão Branco

DE - Weisser Hai





New

Jan  
2011

• 88454

EN - Sea Lion

NL - Zeeleeuw

FR - Otarie

IT - Leone Marino

ES - León Marino

PT - Leão Marinho

DE - Seelöwe



• 88485

EN - Octopus

NL - Octopus

FR - Pieuvre

IT - Polipo

ES - Pulpo

PT - Polvo

DE - Krake

New

April  
2011



• 88391  
**EN - Sperm Whale**  
NL - Potvis  
FR - Grand Cachalot  
IT - Capodoglio  
ES - Cachalote  
PT - Cachalote  
DE - Pottwal



• 88040  
**EN - Manta Ray**  
NL - Manta Rog  
FR - Raie Manta  
IT - Raggio di Manta  
ES - Manta Gigante  
PT - Arraia Manta  
DE - Mantarochen



• 88042  
**EN - Bottlenose Dolphin**  
NL - Dolfijn  
FR - Dauphin  
IT - Delfino di Bottlenose  
ES - Delfin  
PT - Golfinho Nariz de Garrafa  
DE - Grosser Tümmler



● • 88044

**EN - Blue Whale**  
NL - Blauwe Walvis  
FR - Baleine Bleue  
IT - Balena Blu  
ES - Ballena Azul  
PT - Baleia Azul  
DE - Blauwal



● • 88045

**EN - Scalloped Hammerhead Shark**  
NL - Gesulpte Hamerhaai  
FR - Requin Marteau Tacheté  
IT - Squalo Smerlato del Hammerhead  
ES - Tiburón Martillo  
PT - Tubarão Martelo Recortado  
DE - Bogenstirn-Hammerhai



● • 88094

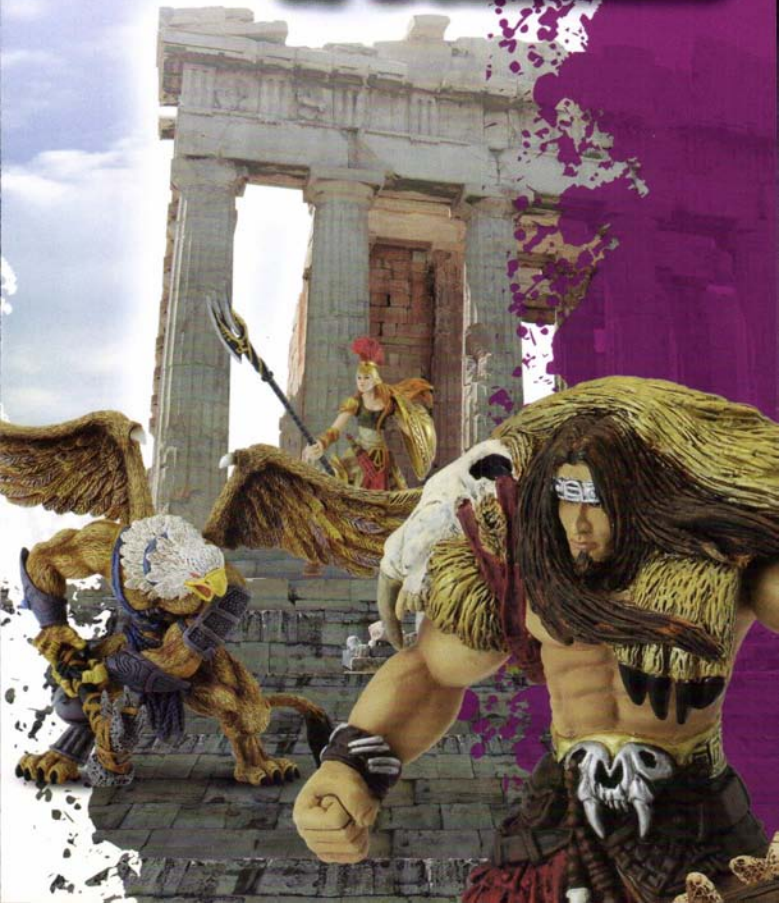
**EN - Loggerhead Turtle**  
NL - Schildpad  
FR - Tortue  
IT - Tartaruga del Loggerhead  
ES - Tortuga  
PT - Tartaruga cabeçaça  
DE - Unechte Karettschildkröte



● • 88095

**EN - Emperor Penguin**  
NL - Keizerpenguin  
FR - Manchot Empereur  
IT - Penguin di Imperatore  
ES - Pingüino Emperador  
PT - Pinguim Imperador  
DE - Kaiserpenguin

# MYTHICAL CREATURES & SOLDIERS



New

April  
2011

• 89308  
EN - Hercules Deluxe Box  
NL - Hercules  
FR - Hercules  
IT - Hercules Deluxe Box  
ES - Hércules  
PT - Hercules  
DE - Herkules





• 89303

**EN - Griffon Deluxe Box**

NL - Griffioen

FR - Griffon

IT - Grifone

ES - Grifo

PT - Grifo

DE - Greif



• 89296

**EN - Cerberus Deluxe Box**

NL - Cerberus

FR - Cerbère

IT - Cerbero

ES - Cerbero

PT - Cérbero

DE - Kerberos



pg 143



• 89297

**EN - Minotaur Deluxe Box**

NL - Minotaur  
 FR - Minotaure  
 IT - Minotauro  
 ES - Minotauro  
 PT - Minotauro  
 DE - Minotauros



• 89300

**EN - Medusa Deluxe Box**

NL - Medusa  
 FR - Méduse  
 IT - Medusa  
 ES - Medusa  
 PT - Medusa  
 DE - Medusa





• 89299  
**EN - Apollo Deluxe Box**  
NL - Apollo  
FR - Apollo  
IT - Apollo  
ES - Apolo  
PT - Apolo  
DE - Apollon



• 89302  
**EN - Dryad Deluxe Box**  
NL - Dryade  
FR - Dryade  
IT - Driade  
ES - Driade  
PT - Driade  
DE - Dryade



pg 145



• 89298

**EN - Cyclops Deluxe Box**

NL - Cyclops

FR - Cyclops

IT - Ciclope

ES - Ciclope

PT - Ciclope

DE - Kyklop



• 89301

**EN - Satyr Deluxe Box**

NL - Sater

FR - Satyre

IT - Satiro

ES - Sátiro

PT - Sátiro

DE - Satyr



• 89304

**EN - Chiron Deluxe Box**

NL - Chiron

FR - Chiron

IT - Chirone

ES - Quirón

PT - Quiron

DE - Cheiron



• 89307

**EN - Athena Deluxe Box**

NL - Athena

FR - Athéna

IT - Atena

ES - Atena

PT - Atena

DE - Athene



pg 147

COLLECT A



- 89306
- EN - Zeus Deluxe Box
- NL - Zeus
- FR - Zeus
- IT - Zeus
- ES - Zeus
- PT - Zeus
- DE - Zeus



- 89305
- EN - Poseidon Deluxe Box
- NL - Poseidon
- FR - Poséidon
- IT - Poseidone
- ES - Poseidón
- PT - Posídon
- DE - Poseidon

**Prehistoric Life Collection**

○ 88034	Velociraptor	020
○ 88036	Tyrannosaurus Rex	020
○ 88037	Triceratops	021
○ 88038	Stegosaurus	020
○ 88039	Pteranodon	027
○ 88060	Eustreptospondylus	027
○ 88061	Agustinia	039
○ 88106	Neovenator	042
○ 88107	Baryonyx	041
○ 88108	Allosaurus	031
○ 88121	Brachiosaurus	021
○ 88131	Spinosaurus	029
○ 88137	Dilophosaurus	038
○ 88139	Hydrotherosaurus	036
○ 88141	Parasauralophus	040
○ 88143	Ankylosaurus	032
○ 88145	Iguanodon	041
○ 88147	Styracosaurus	033
○ 88197	Tyrannosaurus Rex Baby	047
○ 88198	Stegosaurus Baby	046
○ 88199	Triceratops Baby	046
○ 88200	Brachiosaurus Baby	047
○ 88201	Spinosaurus Baby	046
○ 88202	Parasauralophus Baby	047
○ 88220	Amargasaurus	031
○ 88221	Becklespinax	035
○ 88222	Cryolophosaurus	023
○ 88223	Lexovisaurus	043
○ 88224	Nothronychus	038
○ 88225	Orarotitan	043
○ 88226	Pachyrhinosaurus	024
○ 88227	Shunosaurus	028
○ 88237	Liopleurodon	037
○ 88238	Ouranosaurus	030
○ 88239	Palaocanthus	035
○ 88240	Rebbachisaurus	044
○ 88246	Agustinia - Deluxe 1:40 Scale	012
○ 88247	Ankylosaurus - Deluxe 1:40 Scale	013
○ 88248	Baryonyx - Deluxe 1:40 Scale	009
○ 88249	Pteranodon - Deluxe 1:40 Scale	010
○ 88250	Spinosaurus - Deluxe 1:40 Scale	008
○ 88251	Tyrannosaurus Rex - Deluxe 1:40 Scale	007
○ 88252	Dacorex	045
○ 88253	Ceinosaurus	033
○ 88254	Alioramus	042
○ 88255	Tyrannosaurus Rex - Deluxe 1:15 Scale	017
○ 88303	Smilodon	019
○ 88304	Woolly Mammoth - Deluxe 1:20 Scale	018
○ 88305	Hylaosaurus - Deluxe 1:40 Scale	008
○ 88306	Wuerhosaurus	040
○ 88307	Gigantoraptor	044
○ 88308	Nigersaurus - Deluxe 1:20 Scale	017
○ 88313	Paraceratherium - Deluxe	019
○ 88314	Paralititan - Deluxe	014
○ 88315	Rhoetosaurus	034
○ 88316	Chasmosaurus	039
○ 88317	Megalosaurus	045
○ 88318	Corythosaurus	043
○ 88319	Lambosaurus	028
○ 88320	Tylosaurus	036
○ 88333	Woolly Mammoth Calf	018
○ 88334	Sarcosuchus	036
○ 88339	Muttaburrasaurus	042
○ 88340	Tarbosaurus	024
○ 88343	Scelidosaurus - Deluxe 1:40 Scale	010

○ 88353	Stegosaurus - Deluxe 1:40 Scale	011
○ 88354	Psittacosaurus	029
○ 88355	Achelousaurus	041
○ 88361	Tenontosaurus	022
○ 88370	Eotyrannus	023
○ 88371	Herrerasaurus	025
○ 88372	Lufengosaurus	025
○ 88373	Tsintaosaurus	044
○ 88374	Rugops	026
○ 88375	Minmi	032
○ 88388	Edmontonia	040
○ 88395	Jobaria - Deluxe 1:40 Scale	015
○ 88400	Kentrosaurus	022
○ 88401	Comptosaurus	038
○ 88402	Majungatholus	039
○ 88405	Brachiosaurus - Deluxe 1:40 Scale	012
○ 88406	Triceratops - Deluxe 1:40 Scale	011
○ 88407	Velociraptor - Deluxe 1:6 Scale	014
○ 88411	Oviraptor	045
○ 88427	Afrovenator	026
○ 88440	Rhamoloesaurus - Deluxe 1:40 Scale	007
○ 88441	Hatzegopteryx	022
○ 88462	Alamosaurus	024
○ 88465	Kelenken	015
○ 88466	Ampelosaurus	026
○ 88472	Lourinhanosaurus	023
○ 88473	Irritator	025
○ 88489	Attenborosaurus	037
○ 88504	Proceratosaurus	027
○ 88505	Australovenator	032
○ 88509	Liliensternus	028
○ 88510	Utahraptor	033
○ 88511	Ornithocheirus	035
○ 88512	Tarasaurus	029
○ 88513	Plateosaurus	030
○ 88514	Dacentrurus - Deluxe 1:40 Scale	009
○ 88515	Concavenator	031
○ 89280	First Toe of Tyrannosaurus Rex	049
○ 89281	Tooth of Tyrannosaurus Rex	049
○ 89282	Hooked Thumb Claw of Baryonyx	052
○ 89283	Tooth of Triceratops	049
○ 89284	Foot Replica of Tyrannosaurus Rex	050
○ 89285	Foot Replica of Velociraptor	050
○ 89286	Dorsal Plate of Stegosaurus	050
○ 89287	Tooth & Tail Club of Ankylosaurus	051
○ 89288	Tooth & Finger Claw of Allosaurus	051
○ 89289	Hand Claw & Hand Replica of Tyrannosaurus Rex	051
○ 89290	Tooth of Spinosaurus	052
○ 89291	Tooth & Foot Claw of Velociraptor	052
○ 89332	12" Cycad Tree	048

**Horse Collection**

○ 88097	Arabian Stallion Dapple Grey	065
○ 88100	Arabian Stallion Black	065
○ 88101	Mustang Chestnut Pinto	071
○ 88102	Shire Horse Bay	066
○ 88103	Quarter Horse Chestnut	068
○ 88104	Shetland Pony Palomino	075
○ 88105	Thoroughbred Mare	062
○ 88149	Shire Horse Black Pinto	067
○ 88151	Shire Horse Brown	067
○ 88152	Clydesdale Bay Sabino	073
○ 88153	Clydesdale Brown	072
○ 88154	Clydesdale Dapple Grey	072
○ 88155	Clydesdale Grullo Sabino	073
○ 88156	Mustang Dun Appaloosa	070

### House Collection

○ 88157	Mustang Bay	070
○ 88158	Mustang Grey	071
○ 88159	Quarter Horse Dapple Grey	068
○ 88160	Quarter Horse Buckskin	069
○ 88161	Quarter Horse Grullo	069
○ 88162	Shetland Pony Black	075
○ 88163	Shetland Pony White	075
○ 88164	Shetland Pony Chestnut	075
○ 88169	Hay Bale	076
○ 88170	Corral Fence	076
○ 88171	Feeding Trough	076
○ 88228	Lipizzaner Stallion	062
○ 88229	Lipizzaner Mare	063
○ 88244	Thoroughbred Foal - Standing	063
○ 88245	Thoroughbred Foal - Running	063
○ 88310	Hallfing Mare	064
○ 88311	Hallfing Foal - Grazing	064
○ 88312	Hallfing Foal - Looking Back	064
○ 88368	Lipizzaner Foal - Walking	062
○ 88369	Lipizzaner Foal - Lying	063
○ 88389	Clydesdale Mare Grey	074
○ 88390	Clydesdale Mare Bay	074
○ 88431	Hanoverian Stallion Bay	057
○ 88432	Hanoverian Stallion Chestnut	057
○ 88436	Chestnut Appaloosa Stallion	061
○ 88437	Black Appaloosa Stallion	061
○ 88438	Barock Pinto Stallion	054
○ 88439	Friesian Stallion	055
○ 88449	Tennessee Walking Horse Stallion Golden Palomino	055
○ 88450	Tennessee Walking Horse Stallion Bay Pinto	054
○ 88451	Tennessee Walking Horse Foal Chestnut	055
○ 88452	Tennessee Walking Horse Foal Black	054
○ 88463	Andalusian Stallion Bay	060
○ 88464	Andalusian Stallion Grey	060
○ 88475	Arabian Mare Golden Chestnut	056
○ 88476	Arabian Mare Grey	056
○ 88477	Thoroughbred Mare Bay	059
○ 88478	Thoroughbred Mare Black	059
○ 88501	Lusitano Stallion Buckskin	058
○ 88502	Lusitano Stallion Grey	058
○ 89333	Stable Playset and Accessories	076

### Farm Life Collections

○ 88004	Cockerel	081
○ 88005	Hen	080
○ 88006	Sow	079
○ 88007	White Duck	081
○ 88008	Sheep	085
○ 88009	Lamb - Standing	084
○ 88010	Border Collie	084
○ 88063	Piglet - Standing	079
○ 88115	Donkey - Grey	085
○ 88128	White Cockerel	081
○ 88209	Peacock	082
○ 88211	Mute Swan	082
○ 88212	Billy Goat	084
○ 88231	Highland Bull	088
○ 88232	Highland Cow	088
○ 88233	Highland Calf - Standing	088
○ 88234	Hereford Bull	086
○ 88235	Hereford Cow	086
○ 88236	Hereford Calf - Standing	086

○ 88242	Hereford Calf - Grazing	086
○ 88243	Highland Calf - Lying Down	088
○ 88300	Spanish Black Fighting Bull	087
○ 88344	Piglet - Smelling	079
○ 88345	Piglet - Sitting	079
○ 88346	Piglet - Eating	079
○ 88348	Pig Family	079
○ 88376	Mountain Goat Billy	083
○ 88377	Mountain Goat Nanny	082
○ 88378	Mallard Duck - Male	080
○ 88379	Mallard Duck - Female	080
○ 88380	Texas Longhorn Bull	087
○ 88392	Lamb - Looking Back	085
○ 88393	Lamb - Grazing	084
○ 88394	Lamb - Lying	084
○ 88408	Donkey Foal - Grazing	085
○ 88409	Donkey Foal - Walking	085
○ 88479	Chicks	081
○ 88480	Chicks Hatching	080
○ 88481	Friesian Cow	078
○ 88482	Friesian Bull	078
○ 88483	Friesian Calf - Standing	078
○ 88484	Friesian Calf - Suckling	078
○ 88500	Ducklings	081
○ 88507	Black Angus Bull	083
○ 88508	Red Angus Bull	083

### Wild Life Collection

○ 88024	Grizzly Bear Cub	108
○ 88025	African Elephant	101
○ 88026	African Elephant Calf	101
○ 88029	Hippopotamus	100
○ 88030	Grizzly Bear	109
○ 88031	White Rhinoceros	098
○ 88032	Common Zebra	101
○ 88033	Western Gorilla	105
○ 88046	Reticulated Giraffe	095
○ 88064	Reticulated Giraffe Calf	095
○ 88088	Western Gorilla Baby	105
○ 88089	White Rhinoceros Calf	098
○ 88090	Hippopotamus Calf	100
○ 88130	Western African Giraffe Calf	093
○ 88166	Giant Panda	108
○ 88167	Giant Panda Cub - Standing	108
○ 88168	Zebra Foal	100
○ 88203	Baboon Female With Baby	105
○ 88204	Baboon Male	105
○ 88205	Black Panther	099
○ 88206	Leopard	097
○ 88207	Flamingo	106
○ 88208	Dromedary Camel	103
○ 88210	Orangutan	095
○ 88213	Nile Crocodile	096
○ 88214	Polar Bear	109
○ 88215	Polar Bear Cub - Standing	109
○ 88216	Polar Bear Cub - Sitting	109
○ 88217	Meerkat - Standing	106
○ 88218	Meerkat - Walking	106
○ 88219	Giant Panda Cub - Sitting	108
○ 88230	King Cobra	096
○ 88301	Llama	094
○ 88302	Red Kangaroo	103
○ 88309	Lion Family	098
○ 88335	Moose	102
○ 88336	American Bison	100
○ 88356	Koala - Climbing	102
○ 88357	Koala - Eating Eucalyptus	102

○ 88383	American Bald Eagle	106
○ 88396	Black-Faced Spoonbill - Standing	107
○ 88397	Black-Faced Spoonbill - Walking	107
○ 88398	African Buffalo	090
○ 88399	Peregrine Falcon	107
○ 88404	Western African Giraffe - Drinking	092
○ 88410	Tiger	099
○ 88412	Tiger Cub - Lying	099
○ 88413	Tiger Cub - Walking	099
○ 88414	African Lion	091
○ 88415	Lioness	091
○ 88416	Lion Cub - Stretching	091
○ 88417	Lion Cub - Walking	091
○ 88426	White Tiger	104
○ 88428	White Tiger Cub - Lying	104
○ 88429	White Tiger Cub - Walking	104
○ 88459	Ostrich	090
○ 88460	Ostrich Chick - Sitting	090
○ 88461	Ostrich Chick - Walking	090
○ 88486	Asian Elephant	094
○ 88487	Asian Elephant Calf	094
○ 88492	Chimpanzee Male	093
○ 88493	Chimpanzee Female	092
○ 88494	Chimpanzee Cub - Hugging	092
○ 88495	Chimpanzee Cub - Thinking	093
○ 88496	Snow Leopard	097
○ 88497	Snow Leopard Cub - Playing	097
○ 88498	Snow Leopard Cub - Running	096
○ 89329	10* Ginkgo Biloba Tree	110

### Woodlands Collection

○ 88001	Red Fox	112
○ 88002	Rabbit	114
○ 88003	Barn Owl	112
○ 88012	Brown Hare	114
○ 88015	Eurasian Badger	112
○ 88053	Common Otter	114
○ 88241	Dartmoor Pony - Dark Bay	116
○ 88341	Timber Wolf - Howling	113
○ 88342	Timber Wolf - Hunting	113
○ 88362	Dartmoor Pony - Chestnut	116
○ 88363	Wild Boar	117
○ 88364	Wild Sow	117
○ 88365	Wild Piglet - Walking	117
○ 88366	Wild Piglet - Eating	117
○ 88381	Skunk	114
○ 88382	Beaver	113
○ 88458	Hedgehog	112
○ 88467	Red Squirrel - Eating	112
○ 88469	Red Deer Stag	115
○ 88470	Red Deer Hind	115
○ 88471	Red Deer Calf	115

### Insects Collection

○ 88337	Rhinoceros Beetle	122
○ 88338	Mexican Redknee Tarantula	120
○ 88349	Yellow Fat-tailed Scorpion	121
○ 88350	Golden-Ringed Dragonfly	121
○ 88351	Praying Mantis	120
○ 88352	Grasshopper	122
○ 88386	Red-eyed Tree Frog	121
○ 88387	Small Tortoiseshell	122
○ 88474	Ladybird	119
○ 88499	Bumble Bee	119

### Cats & Dogs Collection

○ 88062	Great Dane	126
○ 88065	Great Dane Puppy	126
○ 88066	Old English Sheepdog	127
○ 88067	Old English Sheepdog Puppy	127
○ 88068	Irish Red Setter	128
○ 88069	Irish Red Setter Puppy	128
○ 88070	English Cocker Spaniel	130
○ 88072	Dalmatian	124
○ 88073	Dalmatian Puppy	124
○ 88074	West Highland White	130
○ 88076	Labrador Retriever	125
○ 88077	Labrador Retriever Puppy	125
○ 88078	Yorkshire Terrier	131
○ 88080	Jack Russell Terrier	127
○ 88082	Welsh Corgi	125
○ 88084	German Shepherd	129
○ 88085	German Shepherd Puppy	129
○ 88086	Doberman Pinscher	128
○ 88087	Doberman Pinscher Puppy	128
○ 88116	Golden Retriever	129
○ 88117	Golden Retriever Puppy	129
○ 88173	Afghan Hound	130
○ 88174	Afghan Hound Puppy	130
○ 88175	Airedale Terrier	126
○ 88176	Airedale Terrier Puppy	126
○ 88177	Beagle	127
○ 88179	Bull Dog	124
○ 88180	Bull Dog Puppy	124
○ 88181	Cavalier King Charles Spaniel	131
○ 88183	Chow Chow	130
○ 88184	Chow Chow Puppy	130
○ 88185	Dachshund	127
○ 88187	Greyhound	129
○ 88188	Greyhound Puppy	129
○ 88189	Rottweiler	126
○ 88190	Rottweiler Puppy	126
○ 88191	Rough Haired Collie	131
○ 88192	Rough Haired Collie Puppy	131
○ 88193	Shar Pei	128
○ 88194	Shar Pei Puppy	128
○ 88195	Shih Tzu	125
○ 88321	Birman Cat - Sitting	133
○ 88322	Birman Cat - Standing	133
○ 88323	British Shorthair Cat - Sitting	131
○ 88324	British Shorthair Cat - Stretching	131
○ 88325	Burmese Cat - Standing	133
○ 88326	Burmese Cat - Lying	133
○ 88327	Norwegian Forest Cat - Sitting	133
○ 88328	Norwegian Forest Cat - Standing	133
○ 88329	Persian Cat - Sitting	132
○ 88330	Persian Cat - Lying	132
○ 88331	Siamese Cat - Sitting	132
○ 88332	Siamese Cat - Stretching	132
○ 88384	Bull Terrier - Male	125
○ 88385	Bull Terrier - Female	125
○ 88490	3-Colour House Cat - Sitting	132
○ 88491	3-Colour House Cat - Stretching	132
○ 88506	St Bernard	124

### Sea Life Collection

○ 88040	Manta Ray	139
○ 88041	Great White Shark	137
○ 88042	Bottlenose Dolphin	139
○ 88043	Orca	136
○ 88044	Blue Whale	140
○ 88045	Scalloped Hammerhead Shark	140
○ 88094	Loggerhead Turtle	140

<input type="checkbox"/> 88095	Emperor Penguin	140
<input type="checkbox"/> 88347	Humpback Whale	137
<input type="checkbox"/> 88391	Sperm Whale	139
<input type="checkbox"/> 88453	Whale Shark	136
<input type="checkbox"/> 88454	Sea Lion	138
<input type="checkbox"/> 88455	Manatee	135
<input type="checkbox"/> 88456	Manatee Calf - Swimming	135
<input type="checkbox"/> 88457	Manatee Calf - Sitting	135
<input type="checkbox"/> 88485	Octopus	138

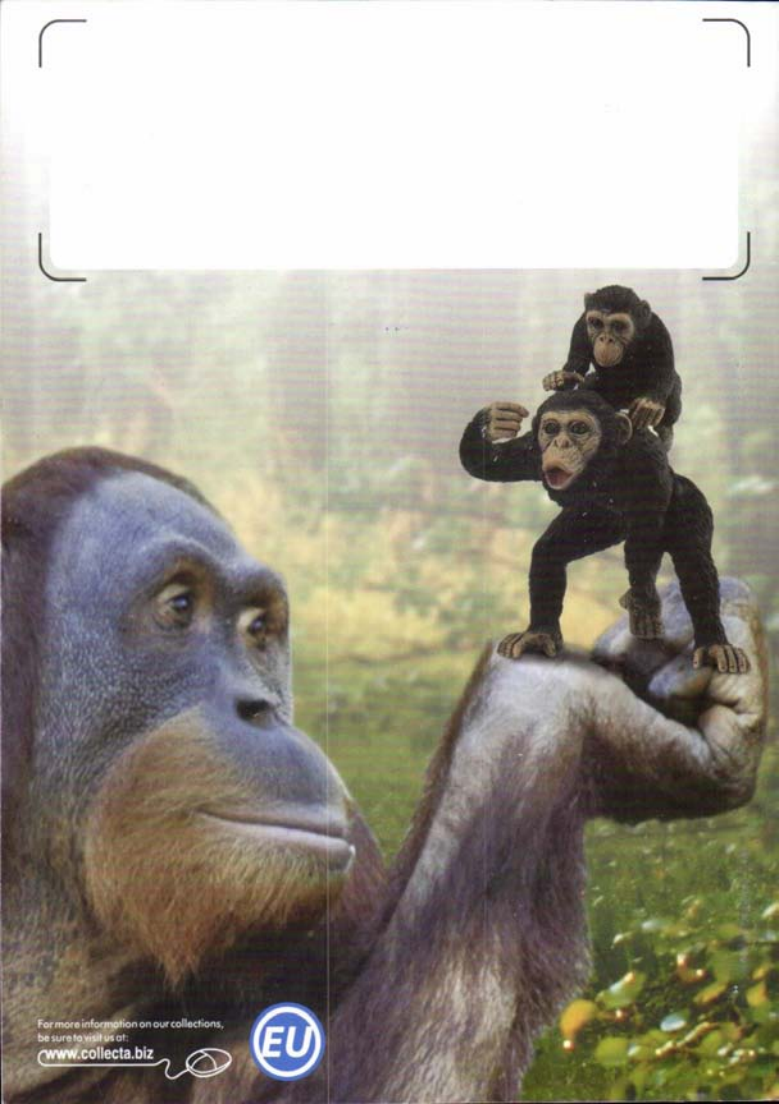
<input type="checkbox"/> 89296	Cerberus	143
<input type="checkbox"/> 89297	Minotaur	144
<input type="checkbox"/> 89298	Cyclops	146
<input type="checkbox"/> 89299	Apollo	145
<input type="checkbox"/> 89300	Medusa	144
<input type="checkbox"/> 89301	Satyr	146
<input type="checkbox"/> 89302	Dryad	145
<input type="checkbox"/> 89303	Griffin	143
<input type="checkbox"/> 89304	Chiron	147
<input type="checkbox"/> 89305	Poseidon	148
<input type="checkbox"/> 89306	Zeus	148
<input type="checkbox"/> 89307	Athena	147
<input type="checkbox"/> 89308	Hercules	142

**Notes:**



**Notes:**





For more information on our collections,  
be sure to visit us at:

[www.collecta.biz](http://www.collecta.biz)

